


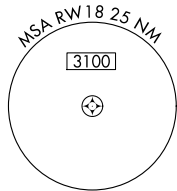
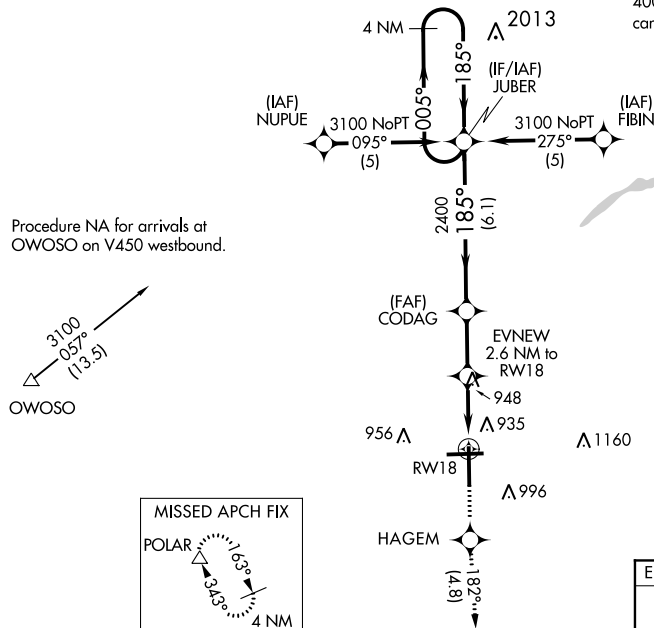
RNAV (GPS) RWY 18  
BISHOP INTL (FNT)

**MISSED APPROACH:** Climb to 3000 direct HAGEM and on track 182° to POLAR and hold.

ATIS 133.15	GREAT LAKES APP CON ★ 118.8 257.9	FLINT TOWER ★ 126.3 (CTAF) 0 257.9	GND CON 121.9	CLNC DEL 121.75	UNICOM 122.95
----------------	--------------------------------------	---------------------------------------	------------------	--------------------	------------------

(IAF) BIRRS  3100 NoPT  
179° (11.2)

**CAUTION:** Brightly lighted parking lot 4000' east of approach end of Rwy 27 can easily be confused for Rwy 27.



ELEV 777

TDZE 777

185° to RW18

81

27

7201 X 150

TWR 884

7849 X 150

36

HIRL Rwy 9-27 and 18-36

EC-1, 03 DEC 2020 to 31 DEC 2020

EC-1, 03 DEC 2020 to 31 DEC 2020