

## DEPARTURE ROUTE DESCRIPTION

**TOP ALTITUDE:  
ASSIGNED BY ATC**

TAKEOFF RUNWAYS 5L/R: Climb on heading 054° to 1220, then left turn heading 300° for RADAR vectors to cross JWELS at or above 4000, thence.....  
TAKEOFF RUNWAY 9: Climb on heading 096° to 1220, then left turn heading 300° for RADAR vectors to cross JWELS at or above 4000, thence.....  
TAKEOFF RUNWAYS 23L/R: Climb on heading 234° to 1220, then on heading 234° for RADAR vectors to cross JWELS at or above 4000, thence.....  
TAKEOFF RUNWAY 27: Climb on heading 276° to 1220, then on heading 276° for RADAR vectors to cross JWELS at or above 4000, thence.....

.....on track 218° to SNDRS, then on (transition). Maintain ATC assigned altitude, expect filed altitude 10 minutes after departure.

BGHRT TRANSITION (SNDRS2.BGHRT):  
TORRR TRANSITION (SNDRS2.TORRR):

NOTE: RNAV 1.

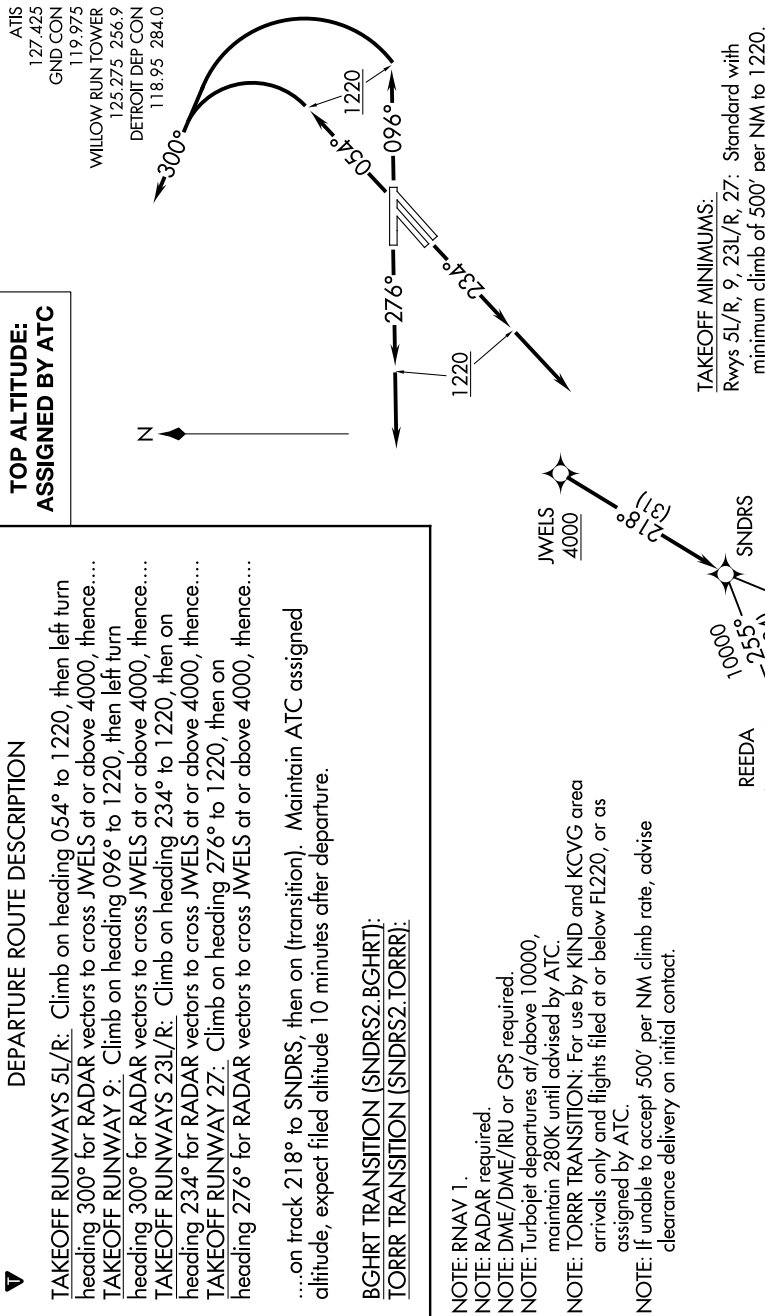
NOTE: RADAR required.

NOTE: DME/DME/IRU or GPS required.

NOTE: Turbojet departures at/above 10000, maintain 280K until advised by ATC.

**NOTE: TORR TRANSITION:** For use by KIND and KCVG area individuals' work unit advised by ATC.  
arrivals only and flights filed at or below FL220, or as assigned by ATC.

NOTE: If unable to accept 500' per NM climb rate, advise clearance delivery on initial contact.



TAKOFF MINIMUMS:

Rwys 5L/R, 9, 23L/R, 27: Standard with minimum climb of 500' per NM to 1220.

NOTE: Chart not to scale.