

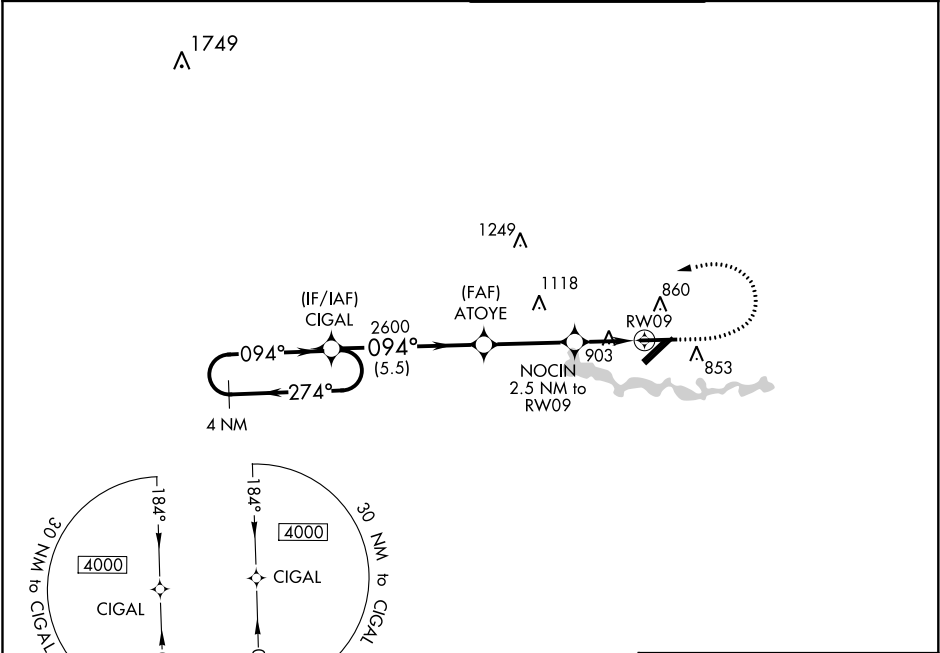
WAAS CH 73035 W09A	APP CRS 094°	Rwy Idg TDZE 715 Apt Elev 716
--	------------------------	---

RNAV (GPS) RWY 9

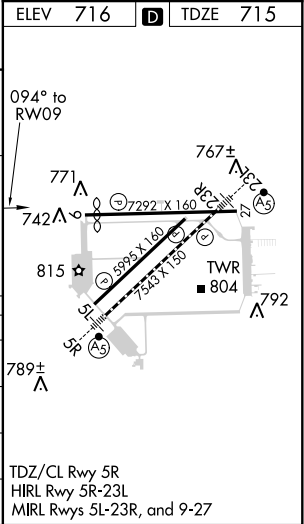
WILLOW RUN (YIP)

<div><div></div><div>DME/DME RNP-0.3 NA. Helicopter visibility reduction below 1 SM NA. For uncompensated Baro-VNAV systems, LNAV/VNAV NA below -19°C (-2°F) or above 54°C (130°F).</div></div> <div>MISSED APPROACH: Climb to 1900 then climbing left turn to 4000 direct CIGAL and hold.</div>
--

ATIS 127.425	DETROIT APP CON 118.95 284.0	WILLOW RUN TOWER 125.275 256.9	GND CON 119.975
------------------------	--	--	---------------------------



<div>4 NM Holding Pattern</div> <div><div>4000</div><div>←274°</div><div>094°→</div><div>CIGAL</div><div>ATOYE</div><div>2600</div><div>094°</div><div>NOCIN</div><div>2.5 NM to RWY09</div><div>RWY09</div><div>GP 3.00°</div><div>TCH 50</div><div>5.5 NM</div><div>3.3 NM</div><div>2.5</div><div>*1560</div><div>* LNAV only.</div></div>				
CATEGORY	A	B	C	D
LPV DA	965-1 250 (300-1)			
LNAV/VNAV DA	1197-1½ 482 (500-1½)			
LNAV MDA	1160-1 445 (500-1)	1160-1¾ 445 (500-1¾)		
CIRCLING	1220-1 504 (600-1)	1220-1½ 504 (600-1½)	1400-2¼ 684 (700-2¼)	



EC-1, 03 DEC 2020 to 31 DEC 2020

EC-1, 03 DEC 2020 to 31 DEC 2020