

WAAS CH <b>93622</b> <b>W23B</b>	APP CRS <b>233°</b>	Rwy Idg <b>5596</b> TDZE <b>712</b> Apt Elev <b>716</b>
--	------------------------	---

RNAV (GPS) RWY 23R  
WILLOW RUN (YIP)

<b>V</b> Helicopter visibility reduction below ¾ SM NA. DME/DME RNP-0.3 NA.		MISSED APPROACH: Climb to 3000 direct FATOT and on track 319° to DEXER and hold.	
ATIS <b>127.425</b>	DETROIT APP CON <b>118.95 284.0</b>	WILLOW RUN TOWER <b>125.275 256.9</b>	GND CON <b>119.975</b>

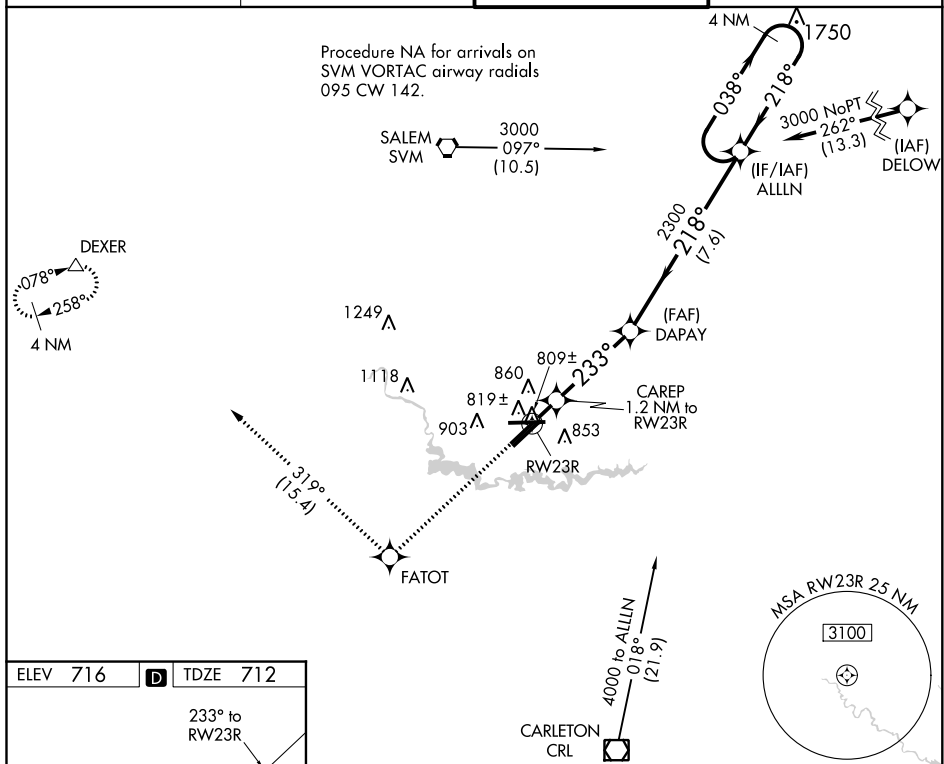


Figure 10-1 illustrates a 4 NM Holding Pattern. The diagram shows a holding pattern for RWY 23L. The pattern is a series of turns around a fix (DAPAY) with a 3.00 NM radius. The holding pattern is 4 NM long. The diagram also shows the approach path from the south, passing through the RWY 23R fix, and then turning to the left to enter the holding pattern. The holding pattern is defined by a 3.00 NM radius turn around DAPAY, followed by a 218° turn to the right, then a 233° turn to the left, and finally a 218° turn to the right. The holding pattern is 4 NM long.

CATEGORY	A	B	C	D
LP MDA		1060-1	348 (400-1)	
LNAV MDA		1080-1	368 (400-1)	
<b>C</b> CIRCLING	1220-1	504 (600-1)	1220-1½ 504 (600-1½)	1400-2¼ 684 (700-2¼)