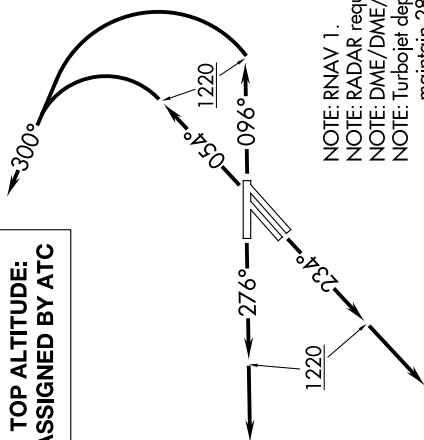


**TOP ALTITUDE:
ASSIGNED BY ATC**



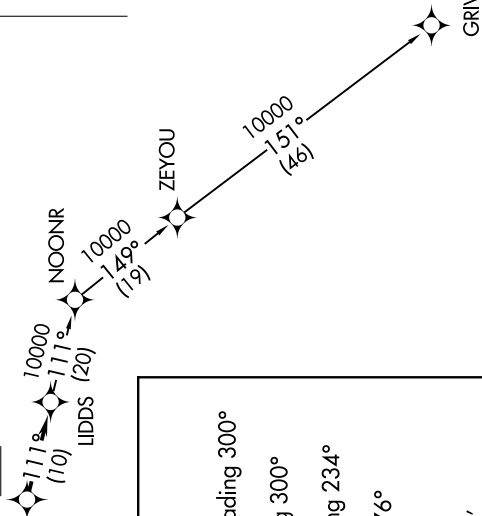
TAKEOFF MINIMUMS:

Rwys 5L/R, 9, 23L/R, 27: Standard with minimum climb of 500' per NM to 1220.

ATIS
127.425
GND CON
119.975
WILLOW RUN TOWER
125.275 256.9
DETROIT DEP CON
118.95 284.0

$$Z \leftarrow$$

KZLOV
15000
4000



NOTE: Chart not to scale.

DEPARTURE ROUTE DESCRIPTION

TAKEOFF RUNWAYS 5L/R: Climb on heading 054° to 1220, then left turn heading 300° for RADAR vectors to cross KZLOV between 4000 and 15000, thence....
TAKEOFF RUNWAY 9: Climb on heading 096° to 1220, then left turn heading 300° for RADAR vectors to cross KZLOV between 4000 and 15000, thence....
TAKEOFF RUNWAYS 23L/R: Climb on heading 234° to 1220, then on heading 234° for RADAR vectors to cross KZLOV between 4000 and 15000, thence....
TAKEOFF RUNWAY 27: Climb on heading 276° to 1220, then on heading 276° for RADAR vectors to cross KZLOV between 4000 and 15000, thence....

.....on track 111° to UDDS, then on (transition). Maintain ATC assigned altitude, expect filed altitude 10 minutes after departure.

GRIVY TRANSITION (LIDDS2.GRIVY):

LIDDS TWO DEPARTURE (RNAV)

(LIDDS2.LIDDS) 15AUG19

DETROIT, MICHIGAN

WILLOW RUN (YIP)

EC-1, 03 DEC 2020 to 31 DEC 2020