

**TOP ALTITUDE:
ASSIGNED BY ATC**

NOTE: RNAV 1.

NOTE: RADAR required.

NOTE: DME/DME/IRU or GPS required.

NOTE: Turbojet departures at/above 10000,

maintain 280K until advised by ATC.

NOTE: For use by aircraft filed

or as assigned by ATC.

NOTE: CAUTION: Parachute jumping 6 NM SW

of BROZZ, 3 NM radius of N

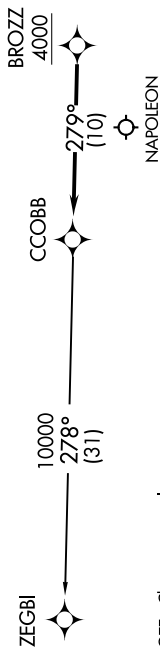
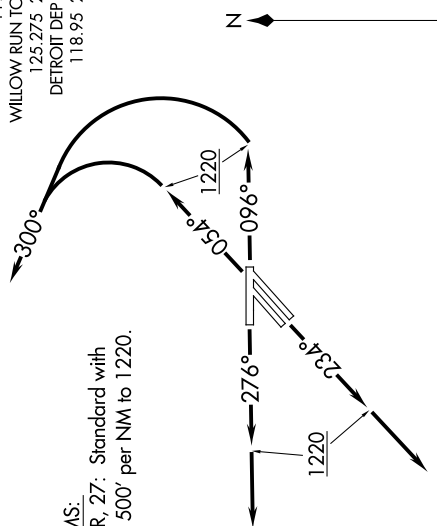
at or below 17999 (SR-SS).

NOTE: If unable to accept 500' per NM climb rate,

advise clearance delivery on initial contact.

TAKEOFF MINIMUMS:

ways 5L/R, 9, 23L/R, 27: Standard with minimum climb of 500' per NM to 1220.



NOTE: Chart not to scale.

DEPARTURE ROUTE DESCRIPTION

TAKEOFF RUNWAYS 5L/R: Climb on heading 054° to 1220, then left turn heading 300° for RADAR vectors to cross BROZZ at or above 4000, thence....

TAKEOFF RUNWAY 9: Climb on heading 096° to 1220, then left turn heading 300° for RADAR vectors to cross BROZZ at or above 4000, thence....

TAKEOFF RUNWAYS 23L/R: Climb on heading 234° to 1220, then on heading 234° for RADAR vectors to cross BROZZ at or above 4000, thence....

TAKEOFF RUNWAY 27: Climb on heading 276° to 1220, then on heading 276° for RADAR vectors to cross BROZZ at or above 4000, thence....

.....on track 279° to CCOBB, then on (transition). Maintain ATC assigned altitude, expect filed altitude 10 minutes after departure.

ZEGBI TRANSITION (CCOBB2.ZEGBI):

EC-1, 03 DEC 2020 to 31 DEC 2020