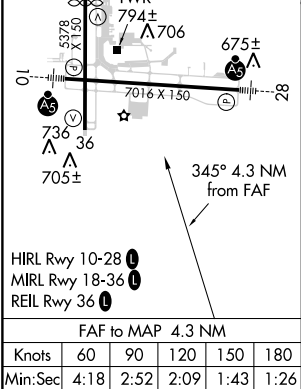
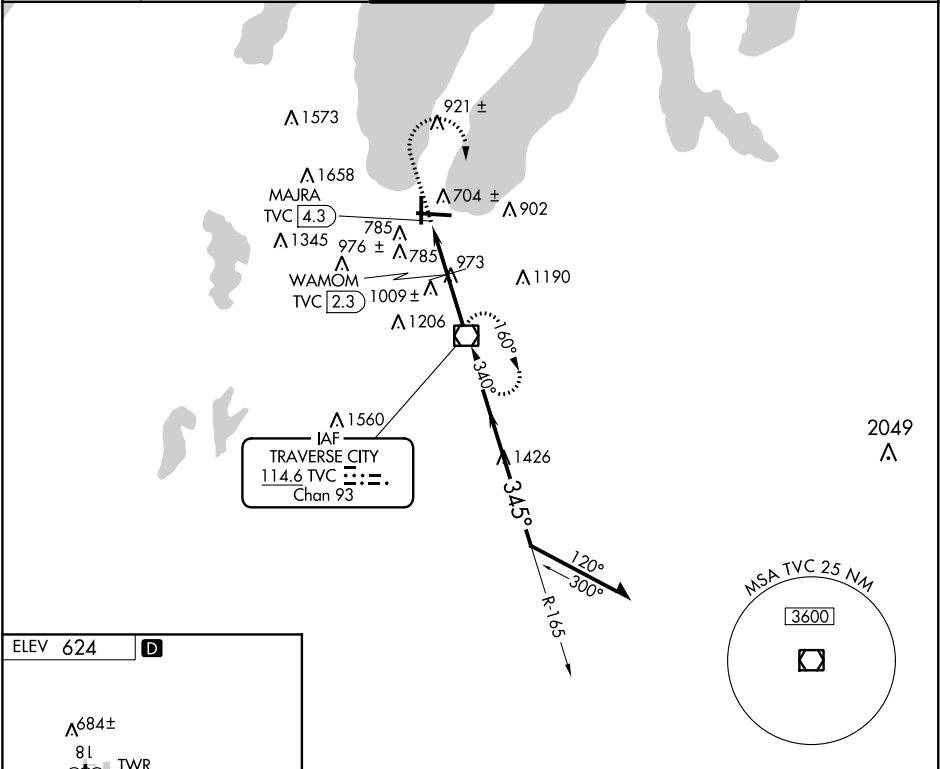


VOR/DME TVC 114.6 Chan 93	APP CRS 345°	Rwy Idg TDZE Apt Elev N/A N/A 624	VOR-A CHERRY CAPITAL (TVC)
---	------------------------	---	-------------------------------

<div><div>▼</div><div>▲</div><div>❄️ -20°C</div></div> <div>When local altimeter setting not received, use Bellaire altimeter setting and increase all MDA 60 feet and all Cat C visibility ¼ mile. Circling to Rwy 18 NA at night.</div>	MISSED APPROACH: Climb to 1800 then climbing right turn to 3000 direct TVC VOR/DME and hold.
---	--

ATIS 119.175	MINNEAPOLIS CENTER 132.9 338.3	TRAVERSE CITY TOWER ★ 124.2 (CTAF) 0 348.6	GND CON 121.8 348.6	UNICOM 122.95
------------------------	--	--	-------------------------------	-------------------------



1800	3000	TVC	TVC VOR/DME	Remain within 10 NM
WAMOM TVC 2.3		MAJRA TVC 4.3	345°	3000
2 NM		2.3 NM	*1440	*1500 when using Bellaire altimeter setting.
CATEGORY	A	B	C	D
CIRCLING	1440-1¼	816 (900-1¼)	1500-2½ 876 (900-2½)	1720-3 1096 (1100-3)
WAMOM FIX MINIMUMS (DME REQUIRED)				
CIRCLING	1300-1	676 (700-1)	1500-2½ 876 (900-2½)	1720-3 1096 (1100-3)

EC-1, 03 DEC 2020 to 31 DEC 2020

EC-1, 03 DEC 2020 to 31 DEC 2020