

WAAS CH 90335 W18A	APP CRS 185°	Rwy Idg 4838 TDZE 622 Apt Elev 624
--	------------------------	---

RNAV (GPS) RWY 18

CHERRY CAPITAL (TV'C)

⚠

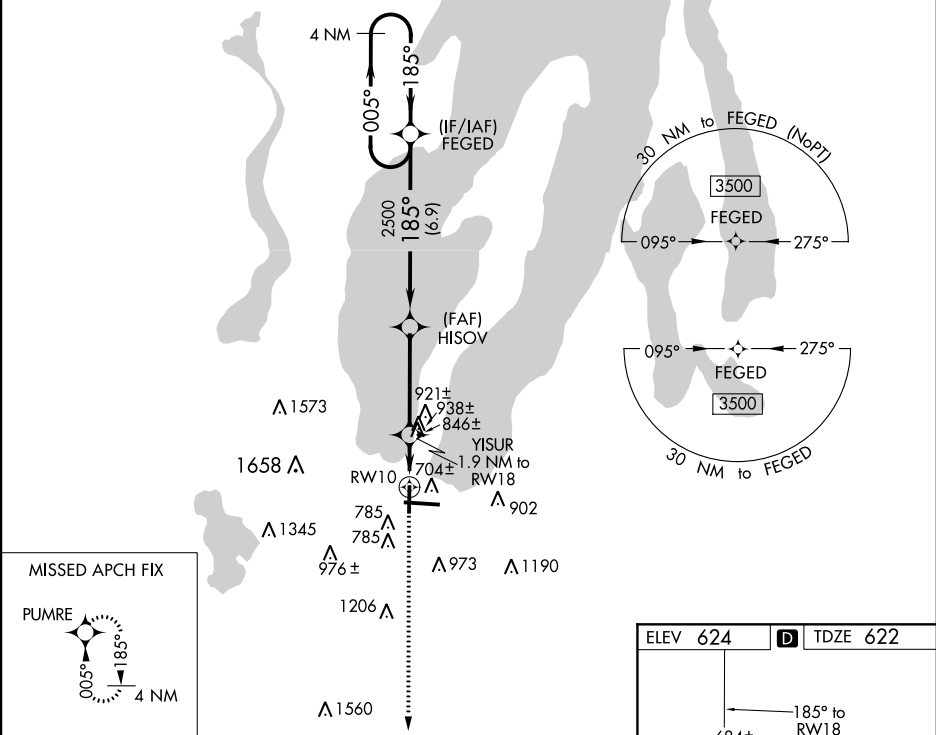
⚠

❄ -20°C

DME/DME RNP-0.3 NA. Helicopter visibility reduction below 1 SM NA. Rwy 18 Straight-in and Circling minimums NA at night. When local altimeter setting not received, use Bellaire altimeter setting and increase all MDA 60 feet, increase LP Cat C and D visibility ¼ mile, LNAV Cat C and D visibility ½ mile, and Circling Cat C visibility ¼ mile.

MISSED APPROACH:
Climb to 3000 direct PUMRE and hold.

ATIS 119.175	MINNEAPOLIS CENTER 132.9 338.3	TRAVERSE CITY TOWER★ 124.2 (CTAF) 0 348.6	GND CON 121.8 348.6	UNICOM 122.95
------------------------	--	---	-------------------------------	-------------------------



Visual Segment - Obstacles.				
4 NM Holding Pattern		3000 PUMRE		
3500 ← 005°		185° →		
FEGED		HISOV		
185°		785°		
2500		YISUR 1.9 NM to RW18		
6.9 NM		1260		
3.9 NM		RW18		
1.9 NM				
CATEGORY	A	B	C	D
LP MDA	1100-1	478 (500-1)	1100-1⅜	478 (500-1⅜)
LNAV MDA	1200-1	578 (600-1)	1200-1¾	578 (600-1¾)
Ⓢ CIRCLING	1200-1 576 (600-1)	1260-1 636 (700-1)	1500-2½ 876 (900-2½)	1720-3 1096 (1100-3)

