

WAAS CH <b>56618</b> <b>W06A</b>	APP CRS <b>060°</b>	Rwy Idg TDZE <b>623</b> Apt Elev <b>629</b>
--	------------------------	---

RNAV (GPS) RWY 6

MUSKEGON COUNTY (MKG)

RNP APCH.

▼

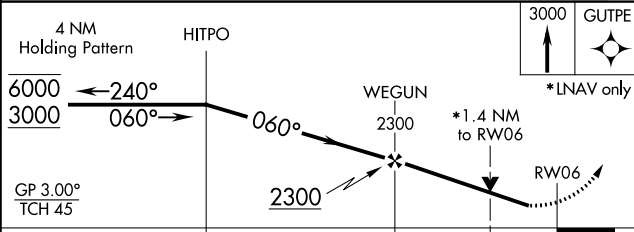
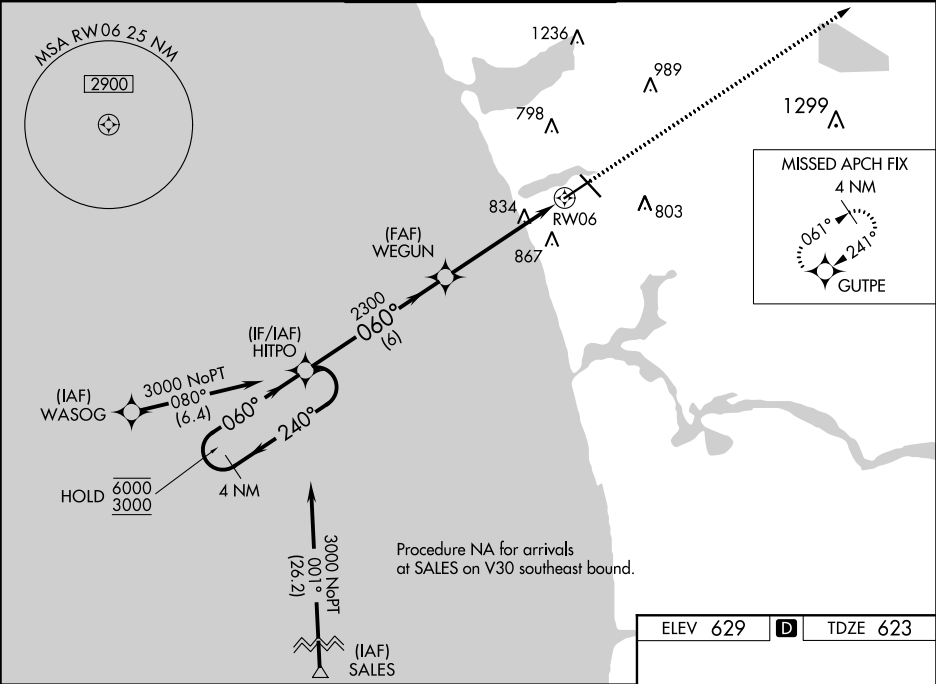
▲

ASR

Rwy 6 helicopter visibility reduction below ¾ SM NA. For uncompensated Baro-VNAV systems, LNAV/VNAV NA below -18°C or above 54°C.

MISSED APPROACH: Climb to 3000 direct GUTPE and hold.

ATIS <b>124.3</b>	GREAT LAKES APP CON★ <b>119.8 290.35</b> (North) <b>133.825 290.35</b> (South)	MUSKEGON TOWER★ <b>126.25</b> (CTAF) <b>0 343.725</b>	GND CON <b>121.6</b>	UNICOM <b>122.95</b>
----------------------	--	--	-------------------------	-------------------------



CATEGORY	A	B	C	D
LPV DA	928-7⁄8 305 (300-7⁄8)			
LNAV/VNAV DA	975-1 352 (400-1)			
LNAV MDA	1100-1 477 (500-1)	1100-13⁄8 477 (500-13⁄8)		
CIRCLING	1100-1 471 (500-1)	1180-1 551 (600-1)	1200-1½ 571 (600-1½)	1200-2 571 (600-2)

ELEV 629 **D** TDZE 623

REIL Rwy 6 **0**  
REIL Rwy 14  
HIRL Rwys 6-24 **0**  
HIRL Rwys 14-32