

WAAS CH 69410 W14A	APP CRS 141°	Rwy Idg TDZE Apt Elev	6100 627 629
--	------------------------	-----------------------------	---

RNAV (GPS) RWY 14

MUSKEGON COUNTY (MKG)

RNP APCH.

▼

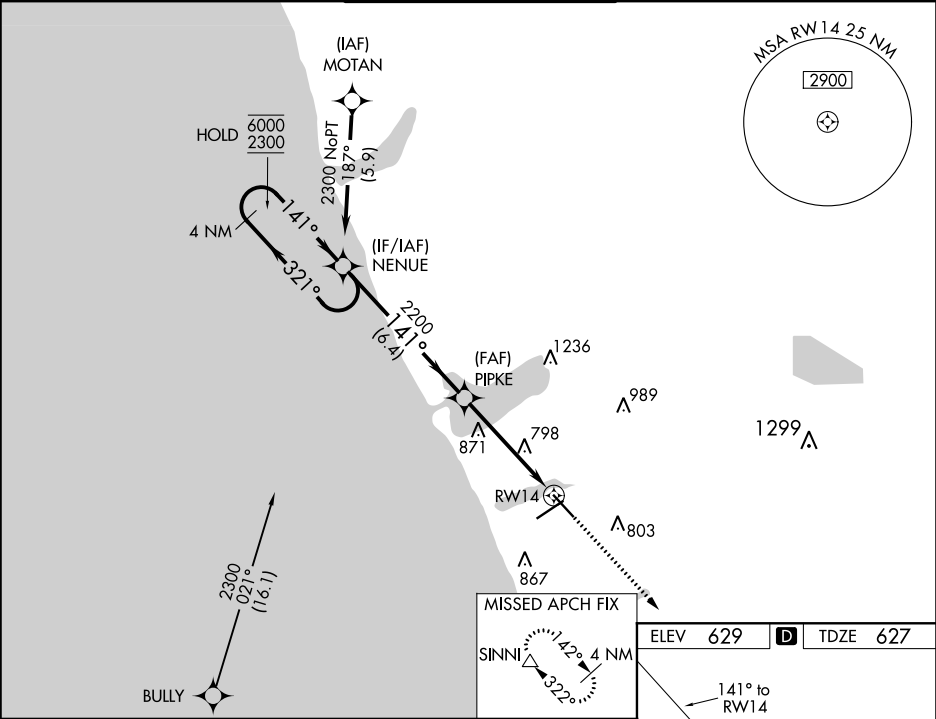
▲

ASR

For uncompensated Baro-VNAV systems, LNAV/VNAV NA below -18°C or above 54°C.

MISSED APPROACH:
Climb to 2700 direct
SINNI and hold.

ATIS 124.3	GREAT LAKES APP CON ★ 119.8 290.35 (North) 133.825 290.35 (South)	MUSKEGON TOWER ★ 126.25 (CTAF) 0 343.725	GND CON 121.6	UNICOM 122.95
----------------------	---	---	-------------------------	-------------------------



4 NM Holding Pattern		NENUE		PIPKE		2700		SINNI	
6000 2300		←321° 141°→		141°		2200		* 1.6 NM to RW14 * LNAV only	
GP 3.00° TCH 45				2200		RW14			
		6.4 NM		3.1 NM		1.6			
CATEGORY	A		B		C		D		
LPV DA			877-¾		250 (300-¾)				
LNAV/ VNAV DA			1079-1½		452 (500-1½)				
LNAV MDA	1180-1	553 (600-1)			1180-1½ 553 (600-1½)	1180-1¾ 553 (600-1¾)			
CIRCLING	1180-1	551 (600-1)			1200-1½ 571 (600-1½)	1200-2 571 (600-2)			

