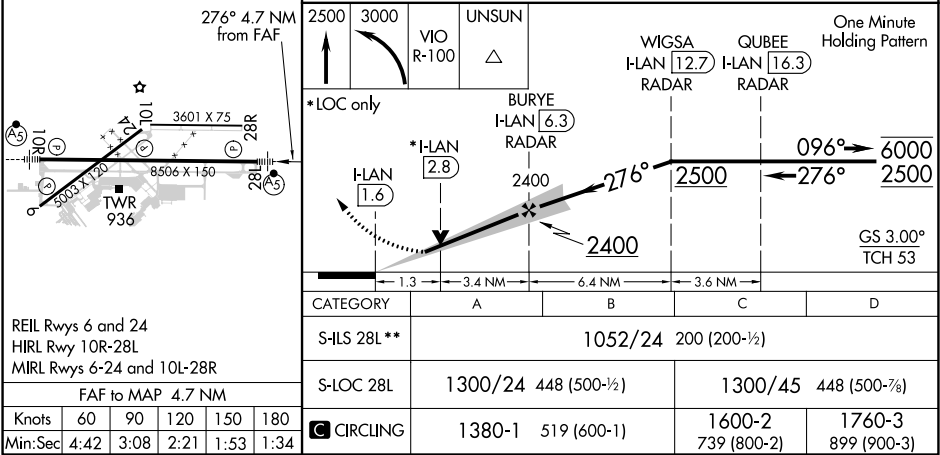
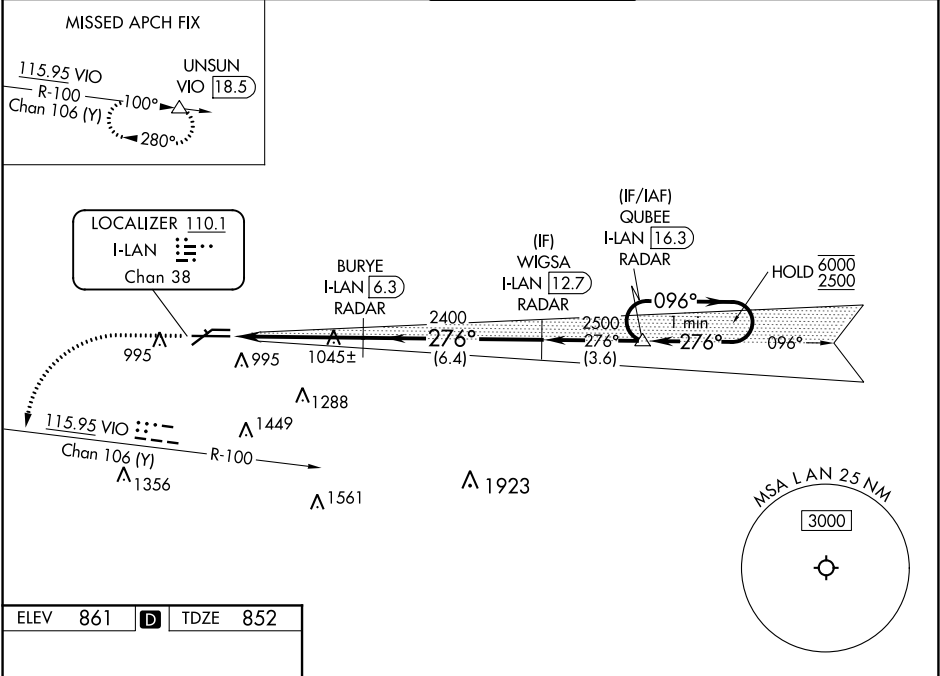


LOC/DME I-LAN 110.1 Chan 38	APP CRS 276°	Rwy ldg 8506 TDZE 852 Apt Elev 861
---	------------------------	---

ILS or LOC RWY 28L
CAPITAL REGION INTL (LAN)

DME required. RADAR required for procedure entry.		MALSR 	MISSED APPROACH: Climb to 2500 then climbing left turn to 3000 on VIO VOR/DME R-100 to UNSUN/VIO 18.5 DME and hold.	
** RVR 1800 authorized with use of FD or AP or HUD to DA.				

ATIS 119.75	GREAT LAKES APP CON * 118.65 226.4	LANSING TOWER 119.9 240.9	GND CON 121.9	CLNC DEL 123.675
-----------------------	--	-------------------------------------	-------------------------	----------------------------



EC-1, 03 DEC 2020 to 31 DEC 2020

EC-1, 03 DEC 2020 to 31 DEC 2020