

## TRMML THREE DEPARTURE (RNAV) Departure Routes

AL-119 (FAA)

DETROIT METROPOLITAN WAYNE COUNTY (DTW)

DETROIT, MICHIGAN

**TOP ALTITUDE:**  
17000

TRMML  See following page for Transition Route

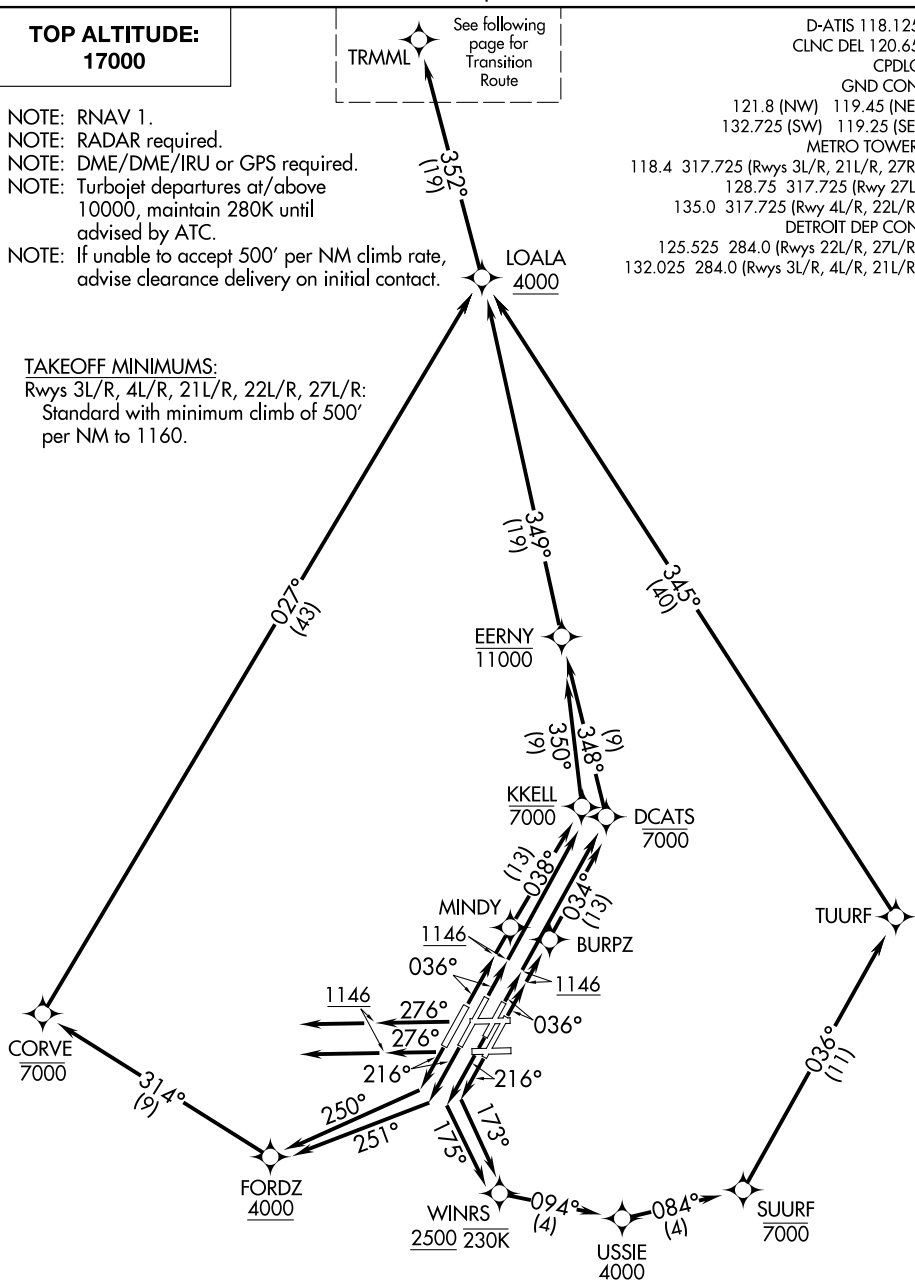
D-ATIS 118.125  
CLNC DEL 120.65  
CPDLC  
GND CON

NOTE: RNAV 1.  
NOTE: RADAR required.  
NOTE: DME/DME/IRU or GPS required.  
NOTE: Turbojet departures at/above  
10000, maintain 280K until  
advised by ATC.  
NOTE: If unable to accept 500' per NM climb rate,  
advise clearance delivery on initial contact.

121.8 (NW) 119.45 (NE)  
132.725 (SW) 119.25 (SE)  
METRO TOWER  
118.4 317.725 (Rwys 3L/R, 21L/R, 27R)  
128.75 317.725 (Rwy 27L)  
135.0 317.725 (Rwy 4L/R, 22L/R)  
DETROIT DEP CON  
125.525 284.0 (Rwys 22L/R, 27L/R)  
132.025 284.0 (Rwys 3L/R, 4L/R, 21L/R)

TAKEOFF MINIMUMS:

Rwys 3L/R, 4L/R, 21L/R, 22L/R, 27L/R:  
Standard with minimum climb of 500'  
per NM to 1160.



(CONTINUED ON FOLLOWING PAGE)

NOTE: Chart not to scale.

## TRMML THREE DEPARTURE (RNAV) Departure Routes

(TRMML3.TRMML) 10OCT19

DETROIT METROPOLITAN WAYNE COUNTY (DTW)

EC-1, 03 DEC 2020 to 31 DEC 2020