

| | | |
|--|------------------------|--|
| WAAS CH 81820 W21A | APP CRS 216° | Rwy Idg 10001 TDZE 632 Apt Elev 645 |
|--|------------------------|--|

RNAV (GPS) Z RWY 21L
DETROIT METROPOLITAN WAYNE COUNTY (DTW)

RNP APCH

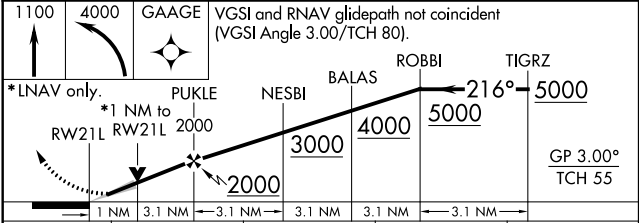
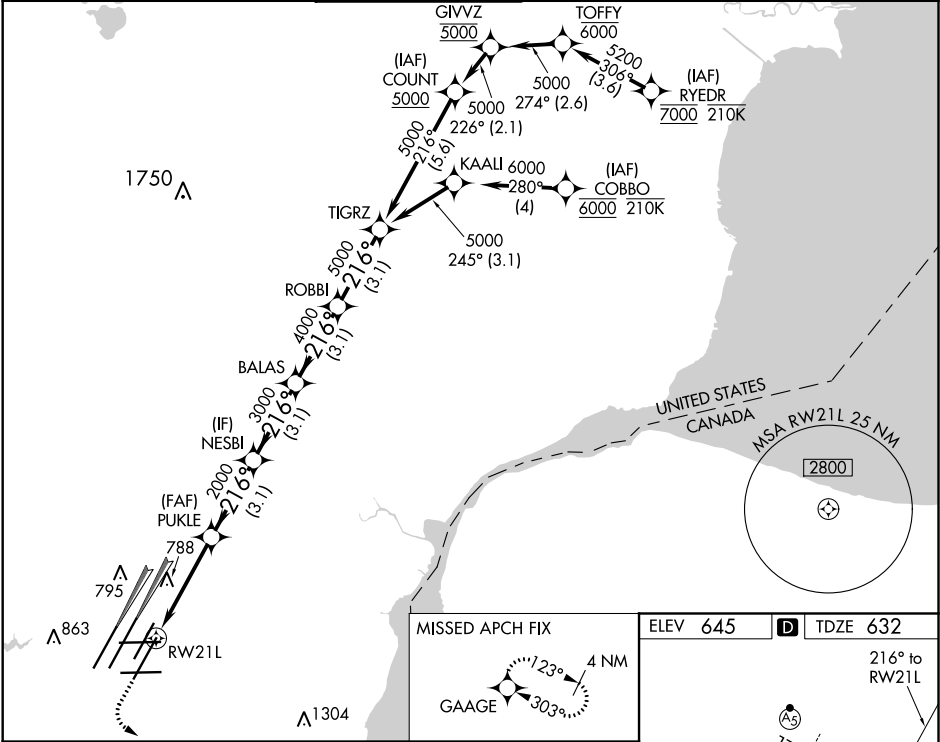
▼ LNAV procedure NA during simultaneous operations. For uncompensated Baro-VNAV systems, LNAV/VNAV NA below -19°C or above 54°C. For inop ALS increase LNAV Cats C and D visibility to RVR 6000. Simultaneous approach authorized. Use of FD or AP required during simultaneous operations.
***RVR 1800 authorized with use of FD or AP or HUD to DA.

MALSR

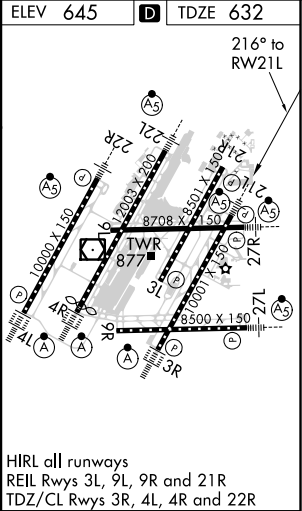


MISSED APPROACH: Climb to 1100 then climbing left turn to 4000 direct GAAGE and hold, continue climb-in hold to 4000.

| | | | | | |
|--------------------------|--|-------------------------------------|---|---------------------------|-------|
| D-ATIS 133.675 | DETROIT APP CON 125.15 284.0 | METRO TOWER 118.4 317.725 | GND CON 121.8 (NW) 119.45 (NE) 132.725 (SW) 119.25 (SE) | CLNC DEL 120.65 | CPDLC |
|--------------------------|--|-------------------------------------|---|---------------------------|-------|



| CATEGORY | A | B | C | D |
|-----------|---------|-------------|-------------------------|-----------------------|
| LPV DA** | | 832/24 | 200 (200-½) | |
| LNAV/VNAV | | 1062/40 | 430 (500-¾) | |
| LNAV MDA | 1040/24 | 408 (400-½) | 1040/40 | 408 (400-¾) |
| CIRCLING | 1180-1 | 535 (600-1) | 1180-1½ 535 (600-1½) | 1240-2 595 (600-2) |



EC-1, 03 DEC 2020 to 31 DEC 2020

EC-1, 03 DEC 2020 to 31 DEC 2020