

RNAV (GPS) PRM Y RWY 22R  
(CLOSE PARALLEL)

DETROIT METROPOLITAN WAYNE COUNTY (DTW)

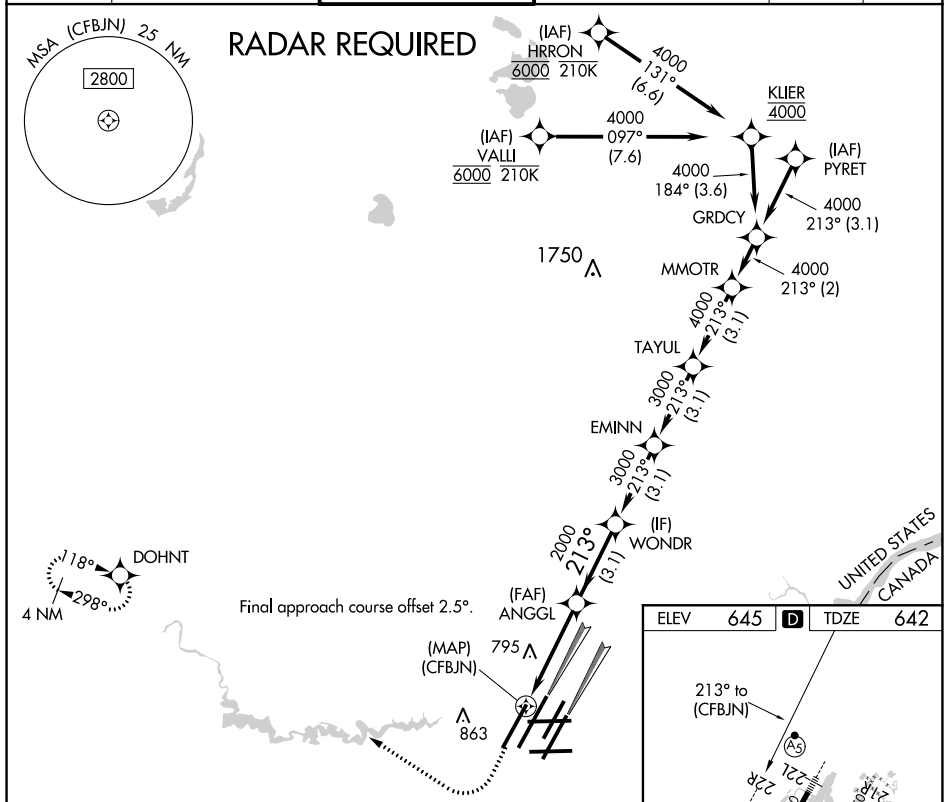
WAAS CH <b>42939</b> <b>W22B</b>	APP CRS <b>213°</b>	Rwy Idg <b>10000</b> TDZE <b>642</b> Apt Elev <b>645</b>
--	------------------------	--

**T** For uncompensated Baro-VNAV systems, LNAV/VNAV NA below -19°C (-2°F) or above 54°C (130°F). DME/DME RNP-0.3 NA. Use of FD or AP providing RNAV track guidance required during simultaneous operations. Simultaneous approach authorized. Dual VHF comm required. See additional requirements on AAUP.

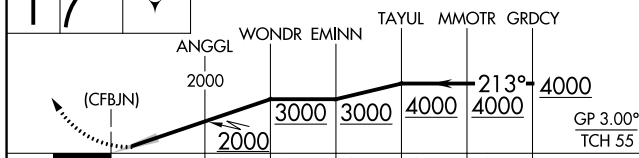
MALSR

**MISSED APPROACH:** Climb to 1100 then climbing right turn to 4000 direct DOHNT and hold.

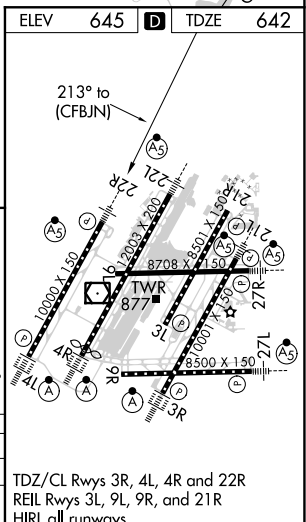
D-ATIS 133.675	DETROIT APP CON 124.05 284.0	METRO TOWER 135.0 317.725 PRM 127.05	GND CON 121.8 (NW) 119.45 (NE) 132.725 (SW) 119.25 (SE)	CLNC DEL 120.65	CPDLC
-------------------	---------------------------------	--	---	--------------------	-------



1100	4000	DOHNT	VGSI and RNAV glidepath not coincident (VGSI Angle 3.00/TCH 71).
------	------	-------	--



		← 4.1 NM →	← 3.1 NM →	← 3.1 NM →	← 3.1 NM →	← 3.1 NM →	← 2 NM →
CATEGORY		A	B		C		D
LPV	DA	892/24		250 (300-½)			
RNAV/ VNAV	DA	1050/45		408 (500-¾)			



DETROIT, MICHIGAN  
Orig 10NOV16

42°13'N-83°21'W

DETROIT METROPOLITAN WAYNE COUNTY (DTW)

## RNAV (GPS) PRM Y RWY 22R (CLOSE PARALLEL)