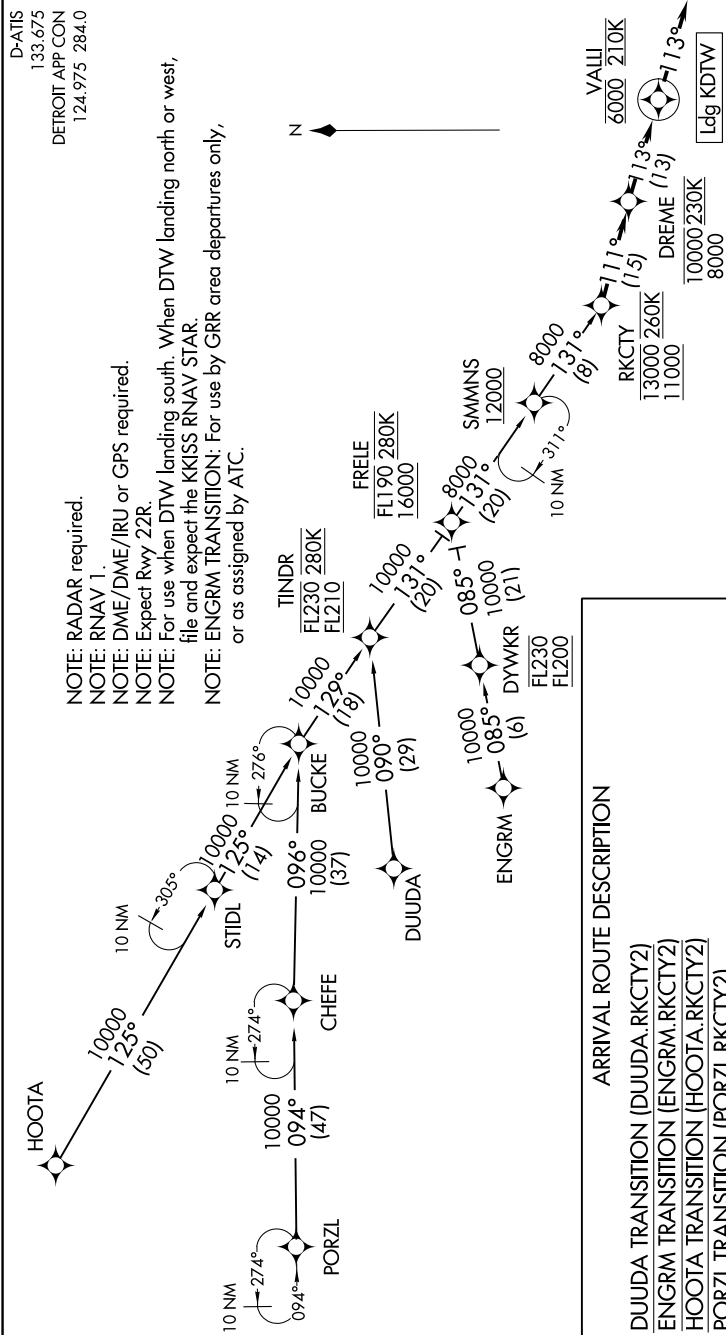


RKCTY TWO ARRIVAL (RNAV)

EC-1, 03 DEC 2020 to 31 DEC 2020



NOTE: Chart not to scale.

ARRIVAL ROUTE DESCRIPTION

- DUUUA TRANSITION (DUUUA.RKCTY2)
- ENGRM TRANSITION (ENGRM.RKCTY2)
- HOOTA TRANSITION (HOOTA.RKCTY2)
- PORZL TRANSITION (PORZL.RKCTY2)

From RKCTY on track 111° to cross DREME between 8000 and 10000 and at 230K, then on track 113° to cross VALLI at 6000 and at 210K, then on track 113°. Expect RADAR vectors to final approach course.

LOST COMMUNICATIONS

From VALLI, execute RNAV (GPS) Y RWY 22R or ILS Y RWY 22R approach.

EC-1, 03 DEC 2020 to 31 DEC 2020