

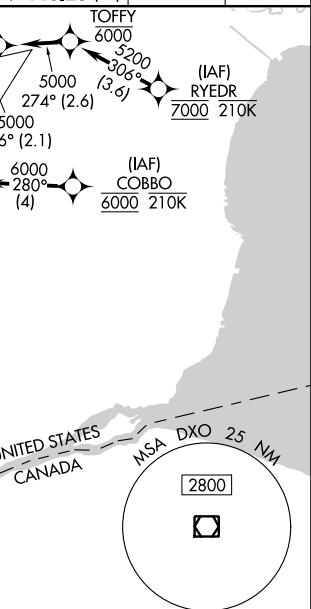
ILS or LOC RWY 21L
DETROIT METROPOLITAN WAYNE COUNTY (DTW)

MALSR

MISSED APPROACH: Climb to 1100 then climbing left turn to 4000 on DXO R-122 to GAAGE/DXO 16 DME and hold, continue climb-in-hold to 4000.

A5

GM



ELEV 645

TDZE 632

216° 4.1 NM from FAF

HIRL all runways

REIL Rwyws 3L, 9L, 9R and 21R

TDZ/CL Rwyws 3R, 4L, 4R and 22R