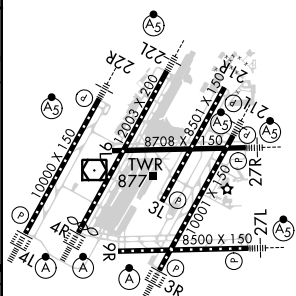
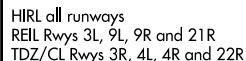


ILS RWY 3R (SA CAT I)  
DETROIT METROPOLITAN WAYNE COUNTY (DTW)

MISSED APPROACH: Climb to 1100 then climbing right turn to 4000 on DXO VOR/DME R-122 to GAAGE/DXO 16.1 DME and hold.

CPDLC



SA CATEGORY I ILS - SPECIAL AIRCREW  
& AIRCRAFT CERTIFICATION REQUIRED