


LOC I-BTL <u>110.5</u>	APP CRS 227°	Rwy Idg 10004 TDZE 929 Apt Elev 952
----------------------------------	------------------------	--

ILS or LOC RWY 23R

BATTLE CREEK EXECUTIVE AT KELLOGG FIELD (BTL)

DME required, RADAR required for procedure entry.

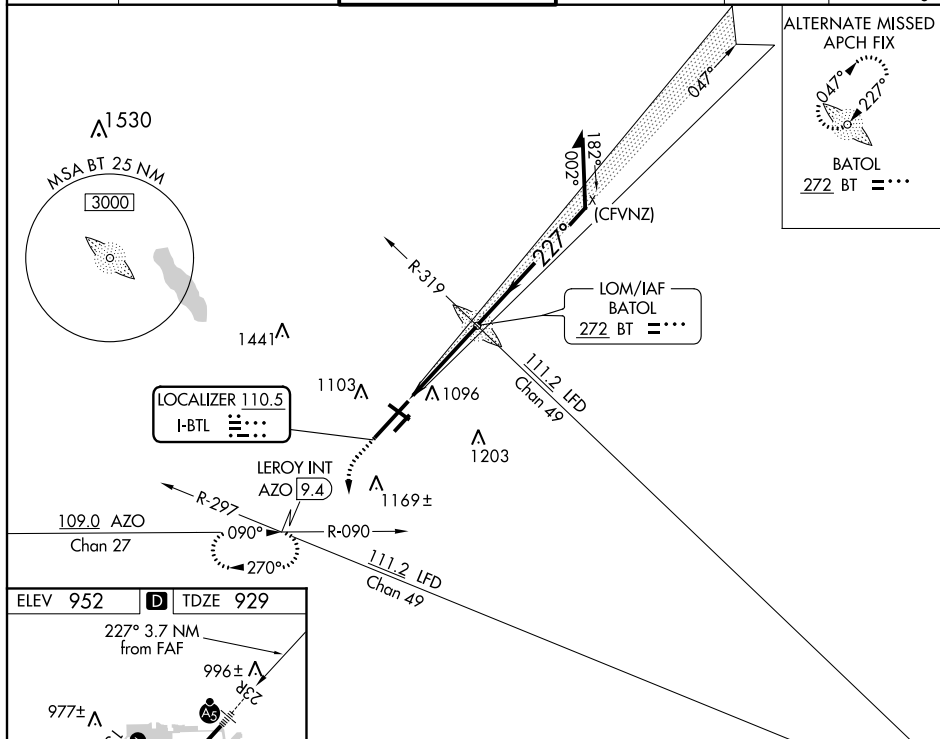
-  Circling Rwy 5R, 23L NA. Circling Rwy 31 NA at night. When local altimeter setting not received, use Grand Rapids altimeter setting: increase DA to 1236 feet and increase all MDA 120 feet. Increase S-LOC 23R Cats C/D visibility to 1¼ SM, Circling Cat C visibility to 2 SM and Cat D visibility to 2¼ SM. For inop ALS, increase S-LOC 23R Cat C/D visibility to 1¾ SM. For inop ALS when using Grand Rapids altimeter setting, increase S-ILS 23R all Cats visibility to RVR 5000. #RVR 1800 authorized with use of FD or AP or HUD to DA (NA when using Grand Rapids altimeter setting).

MALSR



MISSED APPROACH: Climb to 1500 then climbing left turn to 3000 on heading 215° and AZO VOR/DME R-090 to LEROY/AZO 9.4 DME and hold, continue climb-in-hold to 3000.

ATIS	GREAT LAKES APP CON ★		BATTLE CREEK TOWER ★	GND CON	UNICOM	CTAF
128,325	119.2	239.25	126.825	121.7	122.95	126.825



HIRL Rwy 5L-23R **(I)**
 MIRL Rwy 13-31 and 5R-23L **(I)**
 REIL Rwys 5L, 5R, 13, 23L and 31 **(O)**

FAF to MAP 3.7 NM					
Knots	60	90	120	150	180
Min:Sec	3:42	2:28	1:51	1:29	1:14

