

LOC I-LJU <b>108.5</b>	APP CRS <b>245°</b>	Rwy Idg <b>11800</b> TDZE <b>624</b> Apt Elev <b>633</b>
---------------------------	------------------------	----------------------------------------------------------------

ILS or LOC RWY 25  
OSCODA-WURTSMITH (OSC)

DME required.

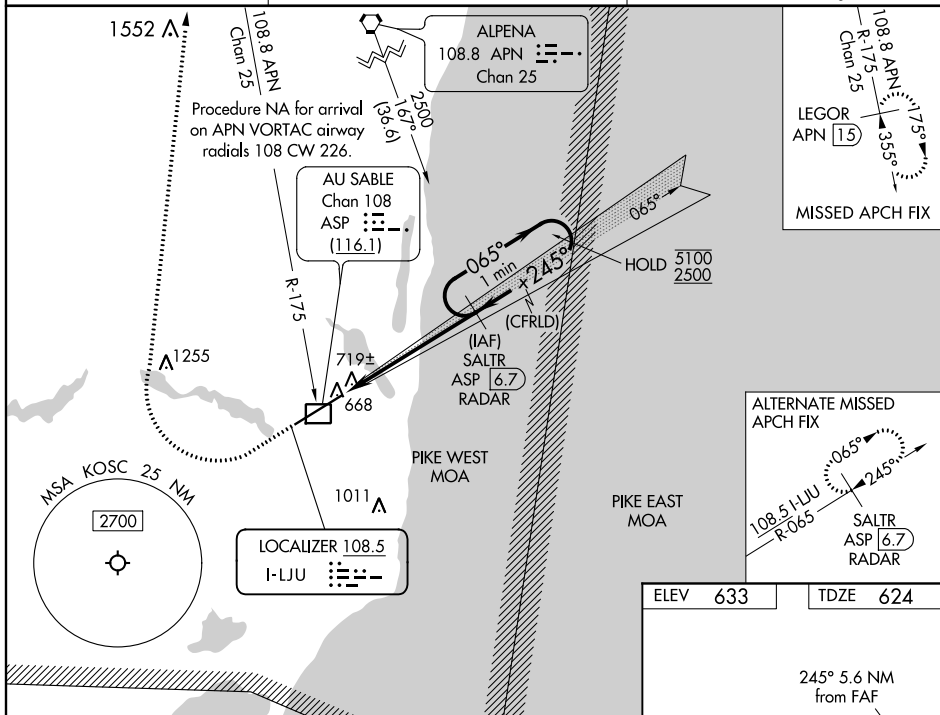
**NA** Circling NA southeast of Rwy 7-25. For inop ALS, increase S-LOC Cats C and D visibility to 1 SM. DME from ASP DME. Simultaneous reception of I-LJU and ASP DME required.


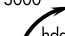
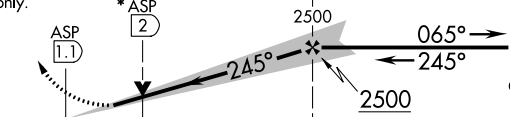
MALSR



**MISSED APPROACH:** Climb to 1300 then climbing right turn to 3000 on heading 030° and on APN VORTAC R-175 to LEGOR/APN 15 DME and hold.

AWOS-3 <b>118.7</b>	MINNEAPOLIS CENTER <b>125.475 269.45</b>	UNICOM <b>123.0 (CTAF) 0</b>
------------------------	---------------------------------------------	---------------------------------



1300  3000  APN R-175 LEGOR APN 15	VGSI and ILS glidepath not coincident (VGSI Angle 3.00°/TCH 72). One Minute Holding Pattern SALTR ASP 6.7 RADAR			
				
CATEGORY	A	B	C	D
S-ILS 25	824-1/2 200 (200-1/2)			
S-LOC 25	980-1/2	356 (400-1/2)	980-5/8	356 (400-5/8)
<b>C</b> CIRCLING	1140-1	507 (600-1)	1160-1/2 527 (600-1/2)	1300-2 667 (700-2)

