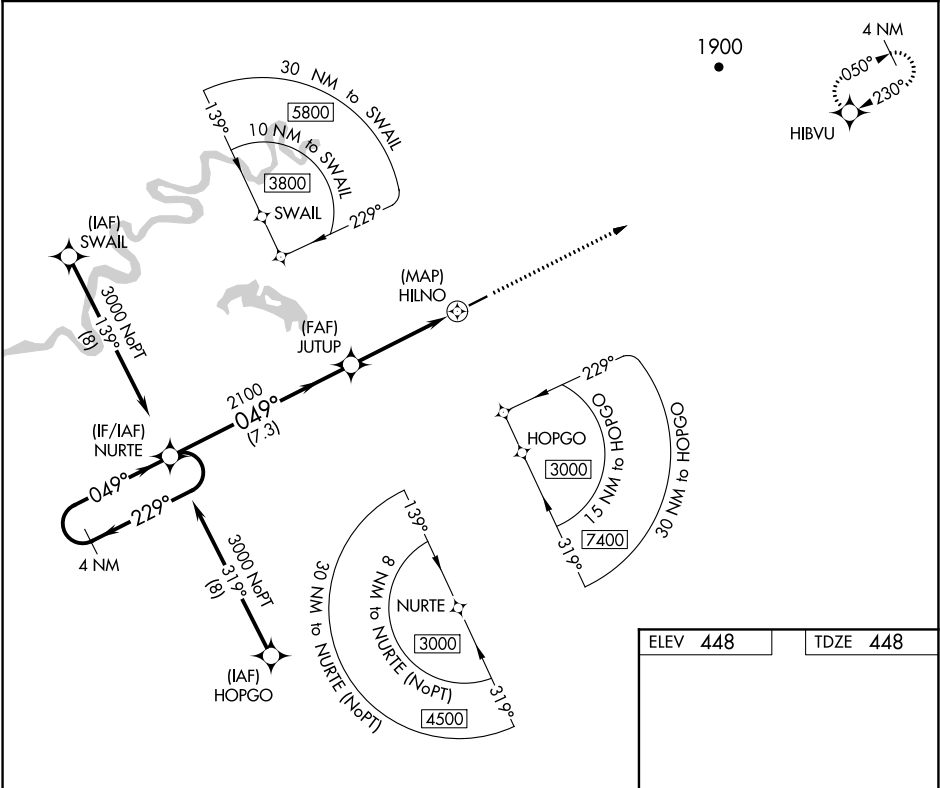


APP CRS	Rwy Idg	4001
049°	TDZE	448
	Apt Elev	448

RNAV (GPS) RWY 5
NIKOLAI (FSP)(PAFS)

RNP APCH.	MISSED APPROACH: Climb to 5000 direct HIBVU and hold, continue climb-in-hold to 5000.
Rwy 5 helicopter visibility reduction below 3/4 SM NA.	

AWOS-3P 118.325	ANCHORAGE CENTER 128.1 353.8	CTAF 122.8
--------------------	---------------------------------	---------------



ELEV 448	TDZE 448
----------	----------

VGSI and descent angles not coincident (VGSI Angle 3.20/TCH 26).				5000	HIBVU
4 NM Holding Pattern					
3000 ← 229° 049° →					
NURTE					
JUTUP					
2100					
0.8 NM to HILNO					
HILNO					
7.3 NM				3.5 NM	0.8
CATEGORY				D	
LNNAV MDA				452 (500-1)	
CIRCLING				1000-2	

