

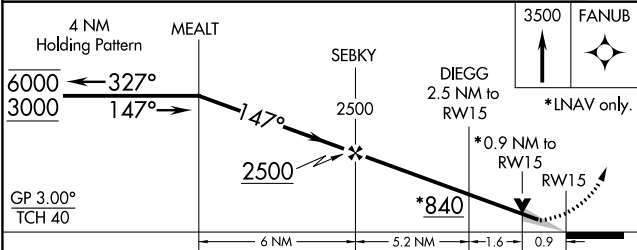
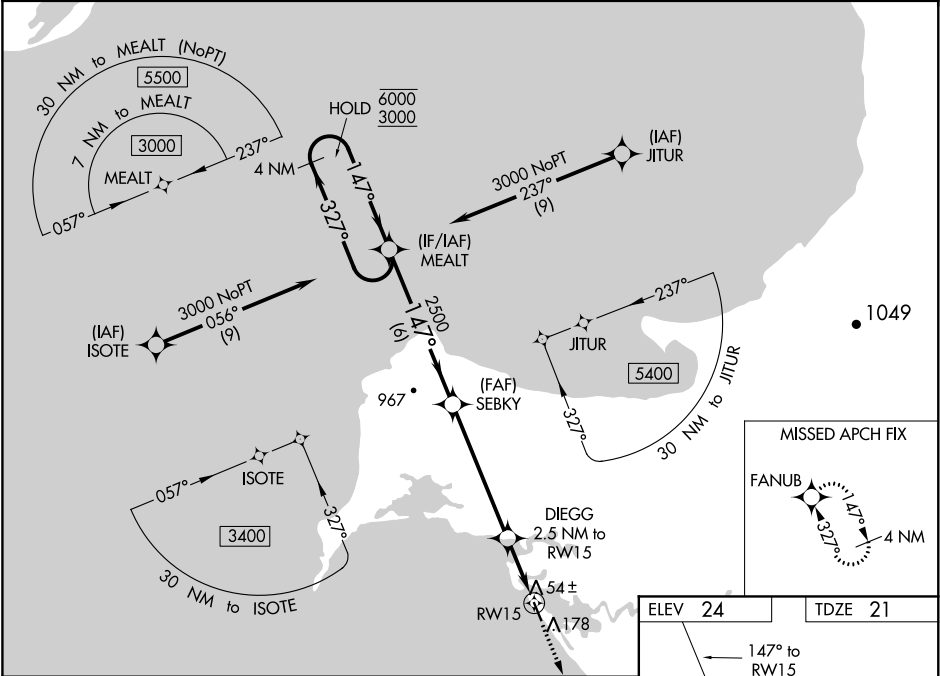
WAAS CH 63013 W15A	APP CRS 147°	Rwy Idg 4001 TDZE 21 Apt Elev 24
--	------------------------	---

RNAV (GPS) RWY 15

SHAKTOOLIK (2C7) (PFSH)

RNP APCH.	Baro-VNAV and VDP NA when using Unalakleet altimeter setting. For uncompensated Baro-VNAV systems, LNAV/VNAV NA below -20°C or above 54°C. When local altimeter setting not received use Unalakleet altimeter setting and increase all DA 72 feet and all MDA 80 feet; increase LNAV Cats C and D visibility 1/8 SM, and Circling Cat D visibility 1/4 SM.	MISSED APPROACH: Climb to 3500 direct FANUB and hold, continue climb-in-hold to 3500.
-----------	--	---

AWOS-3P 124.175	ANCHORAGE CENTER 135.7 335.5	NOME RADIO 122.3	UNICOM 122.8 (CTAF)
---------------------------	--	----------------------------	-------------------------------



CATEGORY	A	B	C	D
LPV DA	271-1	250 (300-1)		
LNAV/VNAV DA	271-1	250 (300-1)		
LNAV MDA	360-1	339 (400-1)		
CIRCLING	480-1	456 (500-1)	480-1½ 456 (500-1½)	740-2¼ 716 (800-2¼)

