

|  |                        |   |
|--|------------------------|---|
| WAAS<br>CH <b>77807</b><br><b>W21A</b> | APP CRS<br><b>211°</b> | Rwy Idg<br>TDZE <b>658</b><br>Apt Elev <b>658</b> |
|--|------------------------|---|

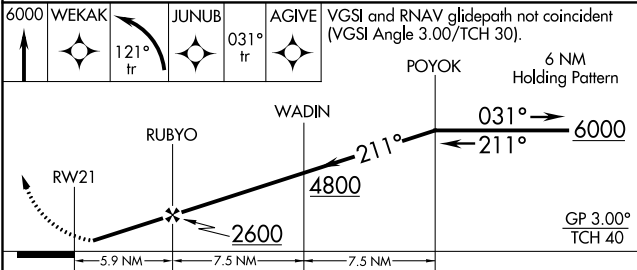
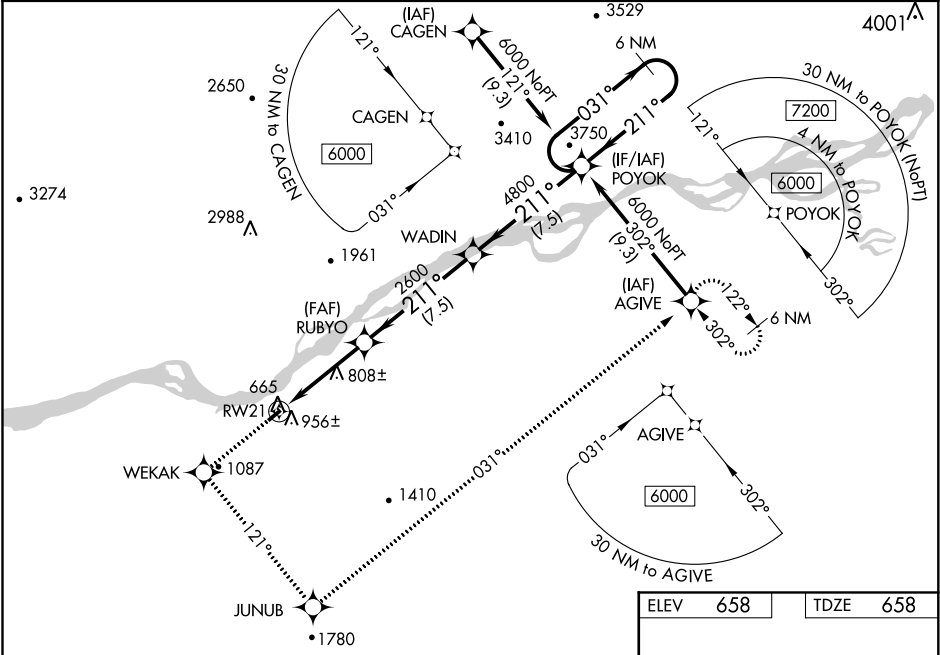
RNAV (GPS) RWY 21

RUBY (RBY) (PARY)

Baro-VNAV NA when using Galena altimeter setting. For uncompensated Baro-VNAV systems, LNAV/VNAV NA below -16°C (4°F) or above 54°C (130°F). DME/DME RNP-0.3 NA. Visibility reduction by helicopters NA. When local altimeter setting not received, use Galena altimeter setting and increase all DA/MDA 340 feet; increase LPV visibility all Cats and LNAV Cat C 1 ¼ mile, LNAV/ VNAV all Cats visibility 2 miles, LNAV Cats A/B and Circling Cats A/B visibility ½ mile, Circling Cat C visibility 1 mile.

MISSED APPROACH: Climb to 6000 direct WEKAK and left turn via 121° track to JUNUB and via 031° track to AGIVE and hold.

|                          |  |                                  |                        |
|--------------------------|--|----------------------------------|------------------------|
| AWOS-3P<br><b>118.25</b> | ANCHORAGE CENTER<br><b>127.0 290.2</b> | FAIRBANKS RADIO<br><b>122.25</b> | CTAF<br><b>122.8 0</b> |
|--------------------------|--|----------------------------------|------------------------|



| CATEGORY      | A                  | B                    | C | D  |
|---------------|--------------------|----------------------|---|----|
| LPV DA        | 919-1              | 261 (300-1)          |   | NA |
| LNAV/ VNAV DA | 1199-2             | 541 (600-2)          |   | NA |
| LNAV MDA      | 1220-1 562 (600-1) | 1220-1½ 562 (600-1½) |   | NA |
| CIRCLING      | 1260-1 602 (700-1) | 1260-1¾ 602 (700-1¾) |   | NA |

ELEV 658 TDZE 658

211° to RW21

0.25% UP

4000 X 100

REIL Rwy 21 0 MIRL Rwy 3-21 0