

APP CRS	Rwy Idg	3300
204°	TDZE	107
	Apt Elev	107

RNAV (GPS) RWY 21

MANOKOTAK (MBA) (PAMB)

⚠

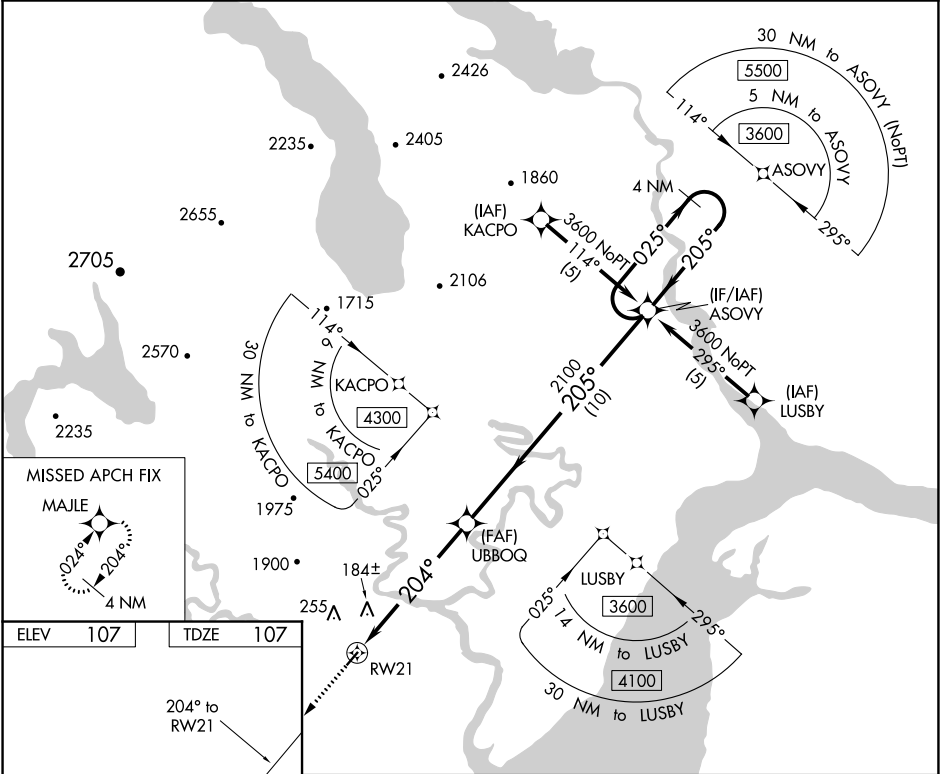
⚠

❄ -34°C

Circling NA northwest of Rwy 3 and 21. DME/DME RNP-0.3 NA. VDP NA when using Dillingham altimeter setting. When local altimeter setting not received use Dillingham altimeter setting and increase all MDA 40 feet and increase LNAV Cat D visibility ¼ SM. Rwy 21 helicopter visibility below 1 SM NA.

MISSED APPROACH: Climb to 2800 direct MAJLE and hold.

AWOS-3P	ANCHORAGE CENTER	CTAF
120.625	132.75 282.35	122.9



ELEV 107

TDZE 107

204° to RW21

3000 X 75

0.8% UP

2800

MAJLE

0.9 NM to RW21

3.04° TCH 40

204°

205°

2100

ASOVY

4 NM Holding Pattern

025°

205°

3600

CATEGORY	A	B	C	D
LNAV MDA	440-1	333 (400-1)		
CIRCLING	540-1 433 (500-1)	560-1 453 (500-1)	560-1½ 453 (500-1½)	660-2 553 (600-2)