

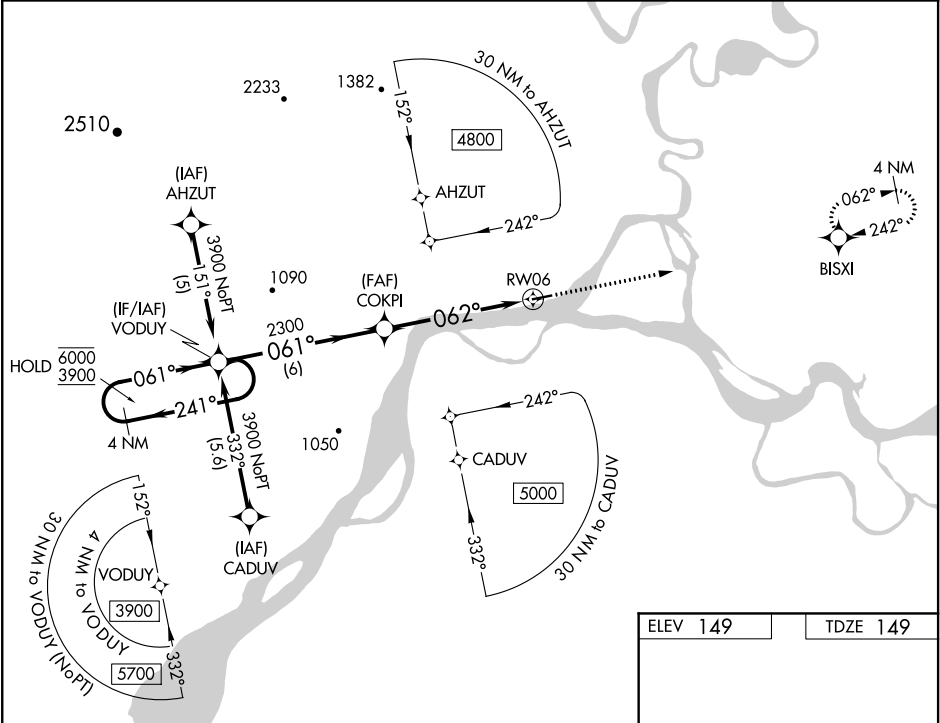
WAAS CH <b>42714</b> <b>W06A</b>	APP CRS <b>062°</b>	Rwy Idg TDZE <b>149</b> Apt Elev <b>149</b>
--	------------------------	---

RNAV (GPS) RWY 6

KOYUKUK (KYU) (PFKU)

RNP APCH.	<div><div>▼</div><div>NA</div><div>❄️ -25°C</div></div> <div>Circling Rwy 24 NA at night. Rwy 6 helicopter visibility reduction below ¾ NA. Use Galena altimeter setting, when not received, procedure NA.</div>	<div>MISSED APPROACH: Climb to 2500 direct BISXI and hold.</div>

GAL/PAGA AWOS-3 <b>132.525</b>	ANCHORAGE CENTER <b>127.0 290.2</b>	CTAF <b>122.9 0</b>
-----------------------------------	--	------------------------



4 NM Holding Pattern		VGSI and RNAV glidepath not coincident (VGSI Angle 4.00/TCH 29).		2500	BISXI
6000 ← 241° 3900 ← 061°		COKPI		↑	✦
GP 3.70° TCH 55		2300		061°	062°
		RWY 06		6 NM	5.4 NM
CATEGORY	A	B	C	D	
LPV DA	579-1¼ 430 (500-1¼)			NA	
LNAV MDA	1220-1¼ 1071 (1100-1¼)	1220-1½ 1071 (1100-1½)	1220-3 1071 (1100-3)	NA	
CIRCLING	1220-1¼ 1071 (1100-1¼)	1220-1½ 1071 (1100-1½)	1220-3 1071 (1100-3)	NA	

