

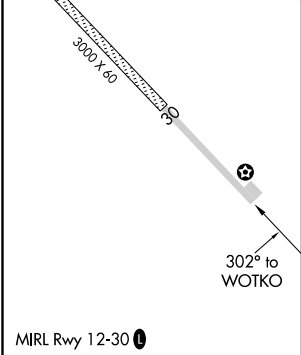
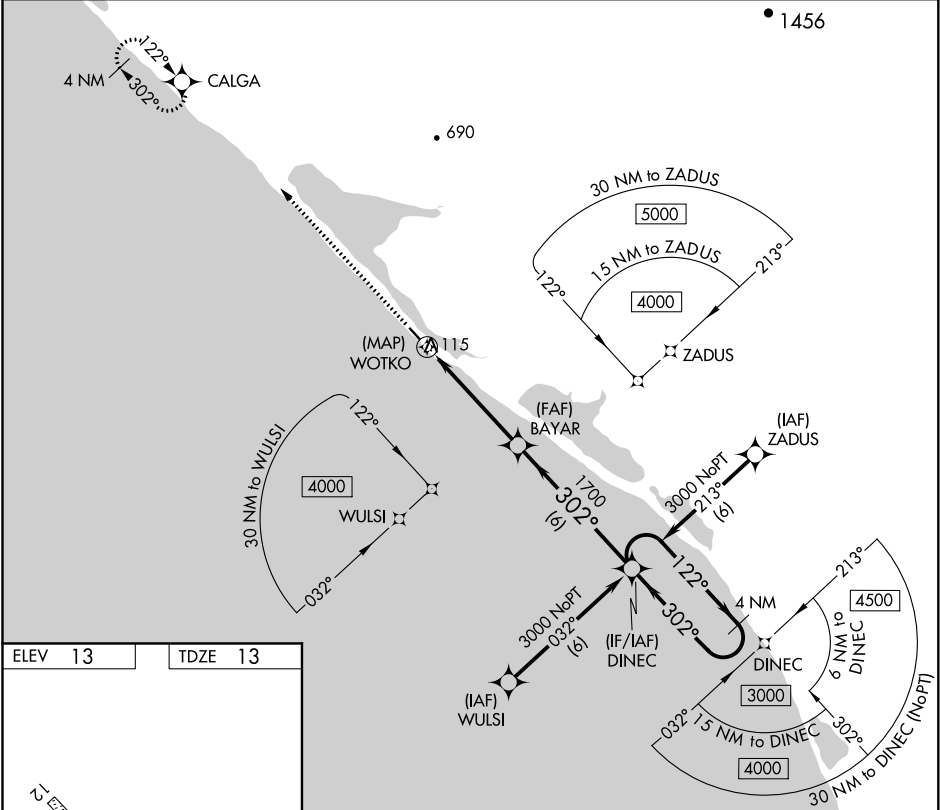
APP CRS	Rwy Idg	3000
302°	TDZE	13
	Apt Elev	13








RNAV (GPS) RWY 30

KIVALINA (KVL)(PAVL)

<div><div><div></div><div></div><div></div></div><div><div>-34°C</div></div></div> <div>DME/DME RNP-0.3 NA. When local altimeter setting not received, use Noatak altimeter setting and increase all MDA 340 feet and LNAV Cat C visibility 1 mile and Circling Cat C visibility ¾ mile. VDP NA when using Noatak altimeter setting.</div>	MISSED APPROACH: Climb to 3000 direct CALGA and hold.
--	---

ASOS 135.8	WTK/PAWN AWOS-3P 135.75	ANCHORAGE CENTER 119.2 263.0	KOTZEBUE RADIO 122.55	UNICOM 122.8 (CTAF) 1
---------------	----------------------------	---------------------------------	--------------------------	--------------------------



3000	CALGA	DINEC			4 NM Holding Pattern
		BAYAR			
0.6 NM to WOTKO			302°	122°→	3000
			←302°		
WOTKO		1700			
≤ 3.00° TCH 40					
					
0.4		0.6		4.2 NM	6 NM
CATEGORY	A	B	C	D	
LNAV MDA	380-1 367 (400-1)				NA
CIRCLING	440-1 427 (500-1)	480-1 467 (500-1)	480-1½ 467 (500-1½)	NA	