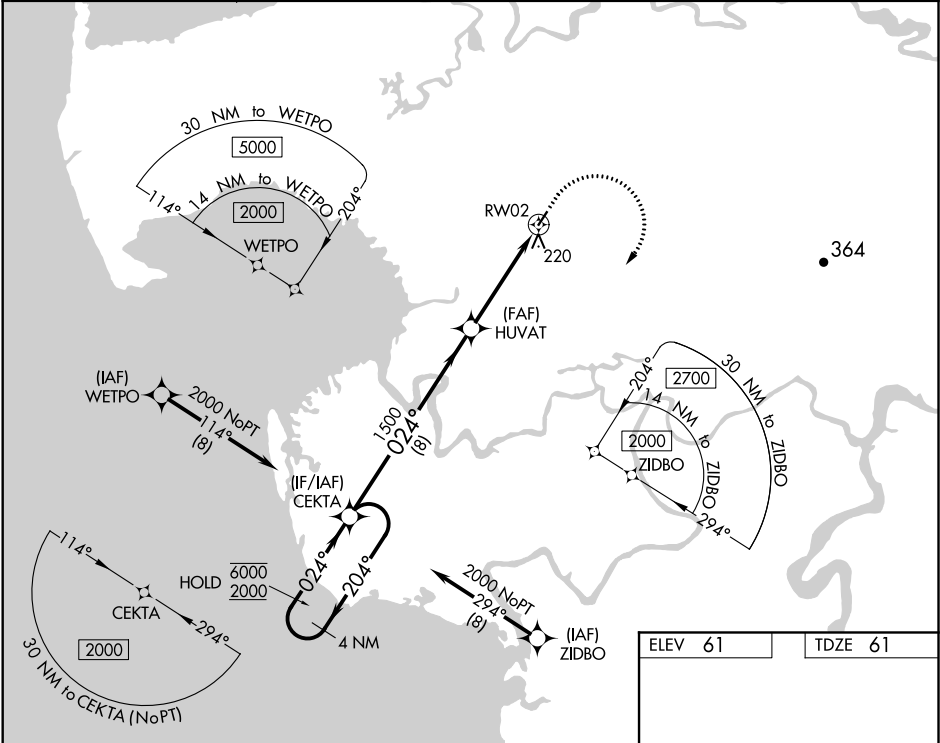


APP CRS	Rwy Idg	3220
024°	TDZE	61
	Apt Elev	61

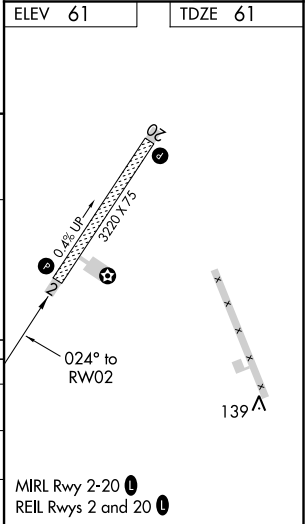
RNAV (GPS) RWY 2
CHEVAK (VAK)(PAVA)

RNP APCH.	MISSED APPROACH: Climb to 500, then climbing right turn to 2000 direct CEKTA and hold.
For uncompensated Baro-VNAV systems, LNAV/VNAV NA below -22°C or above 54°C.	

AWOS-3P 120.625	ANCHORAGE CENTER 124.5	UNICOM 122.8	CTAF 123.0
--------------------	---------------------------	-----------------	---------------



VGSI and RNAV glidepath not coincident (VGSI Angle 3.00/TCH 25).			
4 NM Holding Pattern	CEKTA	HUVAT	RW02
6000 2000	204° 024°	1500 024°	1500 024°
GP 3.00° TCH 40	8 NM	3.1 NM	1.3 NM
CATEGORY	A	B	C
LNAV/VNAV DA	381-1 320 (400-1)		
LNAV MDA	480-1	419 (500-1)	480-1 1/8 419 (500-1 1/8)
CIRCLING	520-1	459 (500-1)	520-1 1/2 459 (500-1 1/2) 700-2 639 (700-2)



AK, 05 NOV 2020 to 31 DEC 2020

AK, 05 NOV 2020 to 31 DEC 2020