

WAAS CH 48840 W35A	APP CRS 351°	Rwy Idg TDZE 138 Apt Elev 138	4000
----------------------------------------	------------------------	---------------------------------------------------	-------------

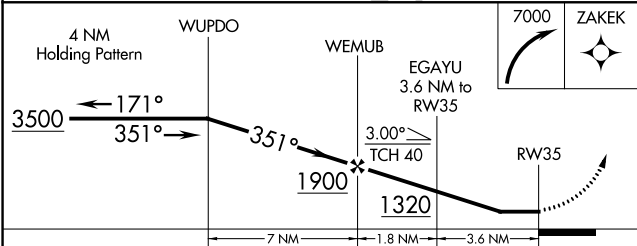
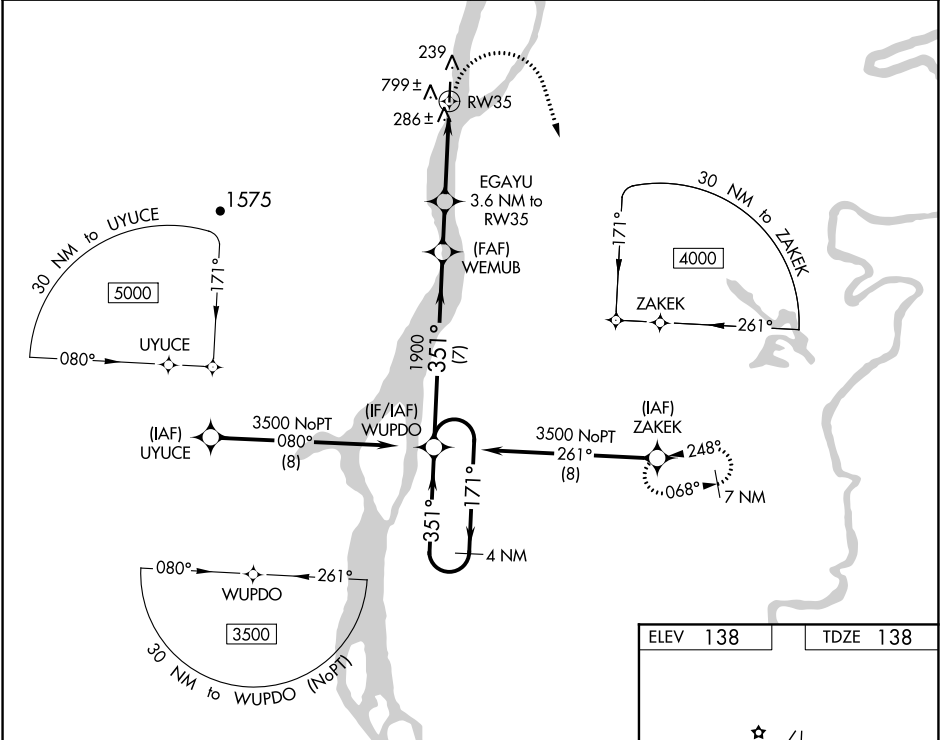
RNAV (GPS) RWY 35
GRAYLING (KGX)(PAGX)

⚠ Circling NA west of Rwy 17-35. Rwy 35 helicopter visibility reduction below ¼ SM NA. DME/DME RNP-0.3 NA.

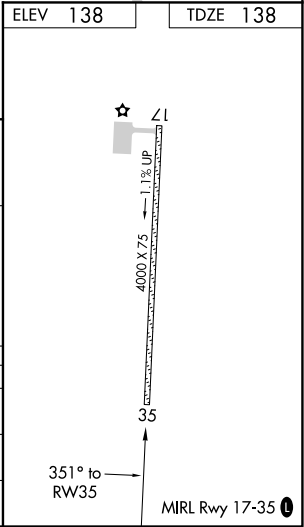
⚠ NA Use Shageluk altimeter setting; when not received, use Anvik altimeter setting.

MISSED APPROACH: Climbing right turn to 7000 direct ZAKEK and hold, continue climb-in-hold to 7000.

SHX/PAHX AWOS-3P 121.575	ANCHORAGE CENTER 118.15 251.05	KENAI RADIO 122.4	CTAF 122.9
------------------------------------	------------------------------------------	-----------------------------	----------------------



CATEGORY	A	B	C	D
LP MDA	700-1	562 (600-1)	700-1½	562 (600-1½)
LPNAV MDA	1080-1¼	942 (1000-1¼)	1080-2½	942 (1000-2½)
C CIRCLING	1100-1¼ 962 (1000-1¼)	1100-1½ 962 (1000-1½)	1220-3 1082 (1100-3)	1420-3 1282 (1300-3)



AK, 05 NOV 2020 to 31 DEC 2020

AK, 05 NOV 2020 to 31 DEC 2020