

APP CRS <b>031°</b>	Rwy Idg <b>3200</b> TDZE <b>40</b> Apt Elev <b>40</b>
------------------------	---

RNAV (GPS) RWY 3  
AKIAK (AKI) (PFAK)

RNP APCH.

**T**

Procedure NA at night. Use Bethel altimeter setting.

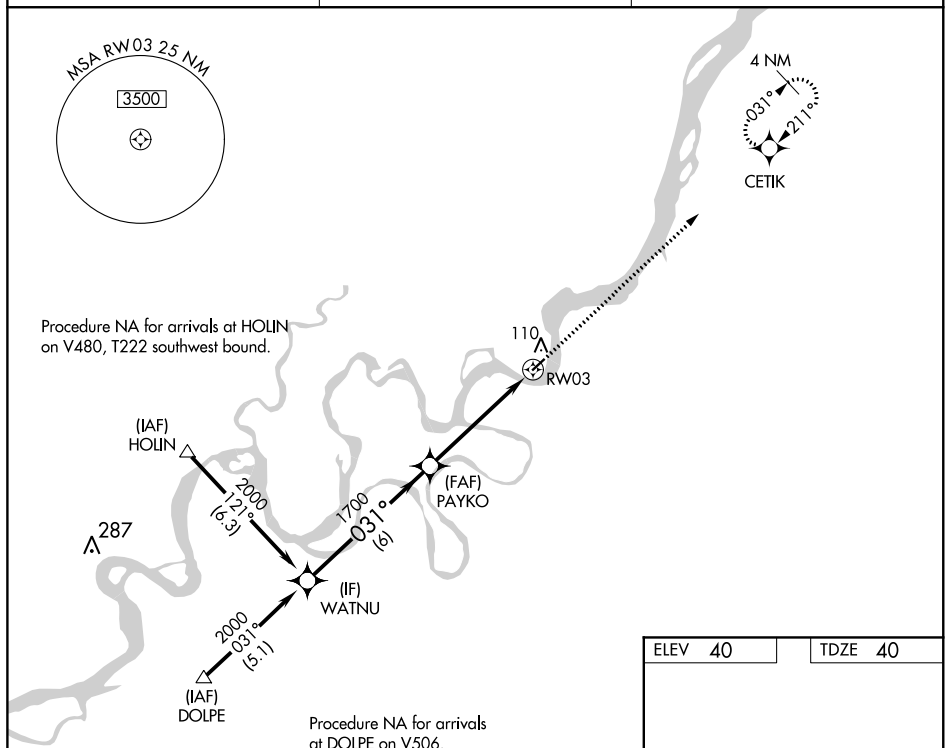
**ANA**

Rwy 3 helicopter visibility reduction below 1 SM NA.

**MISSED APPROACH:** Climb to 2000 direct CETIK and hold.

BET/PABE ASOS  
**135.45**

ANCHORAGE CENTER  
125.2 372.0

CTAF  
122.9 

Visual Segment - Obstacles.

WATNU 2000

031°

PAYKO 1700

RW03

6 NM

5 NM

CATEGORY	A	B	C	D
LNNAV MDA	540-1	500 (500-1)	NA	
CIRCLING	540-1	500 (500-1)	NA	

