


APP CRS	Rwy Idg	4000
013°	TDZE	74
	Apt Elev	75

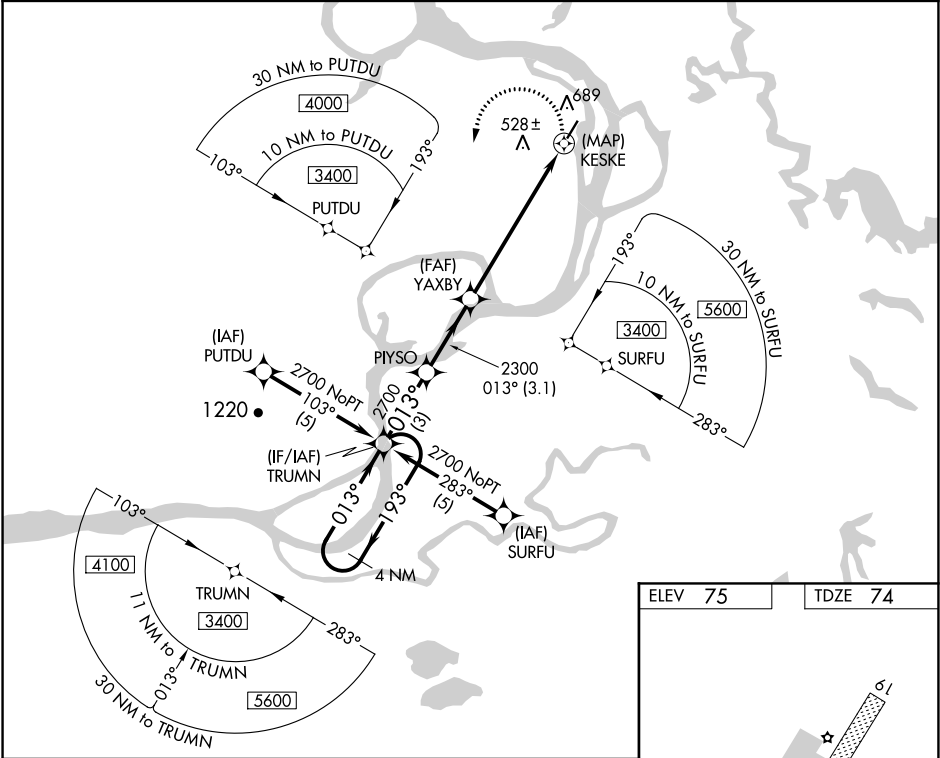
RNAV (GPS) RWY 1
HOLY CROSS (HCA) (PAHC)

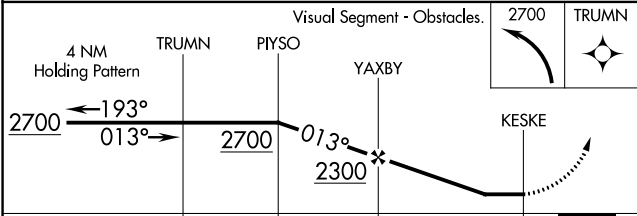
RNP APCH.

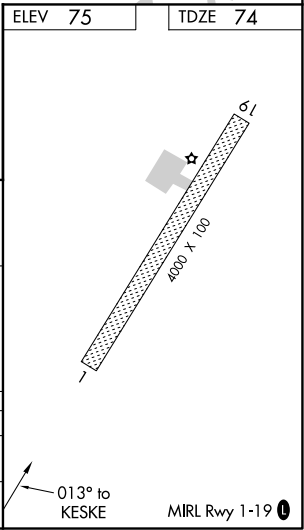
 Circling NA west of Rwy 1-19. When local altimeter setting not received, use Anvik altimeter setting and increase all MDAs 120 feet, and increase visibility LNAV Cat A, B, D ¼ SM, Cat C ½ SM and Circling Cat B, D ¼ SM, Cat C ½ SM. Circling Rwy 19 NA at night. Rwy 1 helicopter visibility reduction below ¾ SM NA.

MISSED APPROACH: Climbing left turn to 2700 direct TRUMN and hold.

AWOS-3P 118.325	ANCHORAGE CENTER 118.15 251.05	KENAI RADIO 122.45	CTAF 122.8 0
--------------------	-----------------------------------	-----------------------	-----------------



Visual Segment - Obstacles.				
				
CATEGORY	A	B	C	D
LNAV MDA	940-1 866 (900-1)	940-1¼ 866 (900-1¼)	940-2½ 866 (900-2½)	940-2¾ 866 (900-2¾)
CIRCLING	940-1¼ 865 (900-1¼)	865 (900-1¼)	940-2½ 865 (900-2½)	940-2¾ 865 (900-2¾)



AK, 05 NOV 2020 to 31 DEC 2020

AK, 05 NOV 2020 to 31 DEC 2020