

WAAS CH 42529 W28A	APP CRS 267°	Rwy Idg 3001 TDZE 14 Apt Elev 14
--	------------------------	---

RNAV (GPS) RWY 28
SCAMMON BAY (SCM) (PACM)

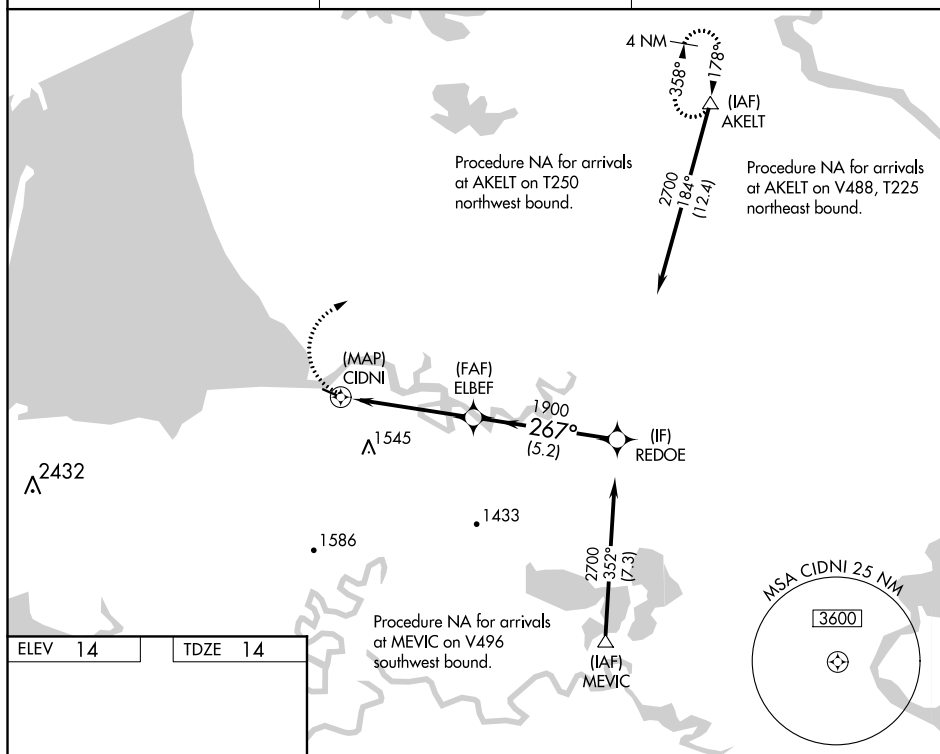
T When local altimeter setting not received, use Hooper Bay altimeter
A setting and increase all MDA 360 feet increase LP Cat B visibility
☔ ¼ mile. Circling NA south of Rwy 10-28. DME/DME RNP-0.3 NA.
-21°C Procedure NA at night. Helicopter visibility reduction below 1 SM NA.

MISSED APPROACH: Climbing right turn to 4000 direct AKELT and hold.

AWOS-3P
118.425

ANCHORAGE CENTER
124.5

UNICOM
123.0 (CTAF) **L**



SCAMMON BAY, ALASKA
Amdt 1A 24JUL14

61°51'N-165°34'W

SCAMMON BAY (SCM)(PACM)
RNAV (GPS) RWY 28