

APP CRS
101°

Rwy Idg
TDZE
Apt Elev

3001
14
14

RNAV (GPS) RWY 10
SCAMMON BAY (SCM) (PACM)

⚠

⚠

❄ -21°C

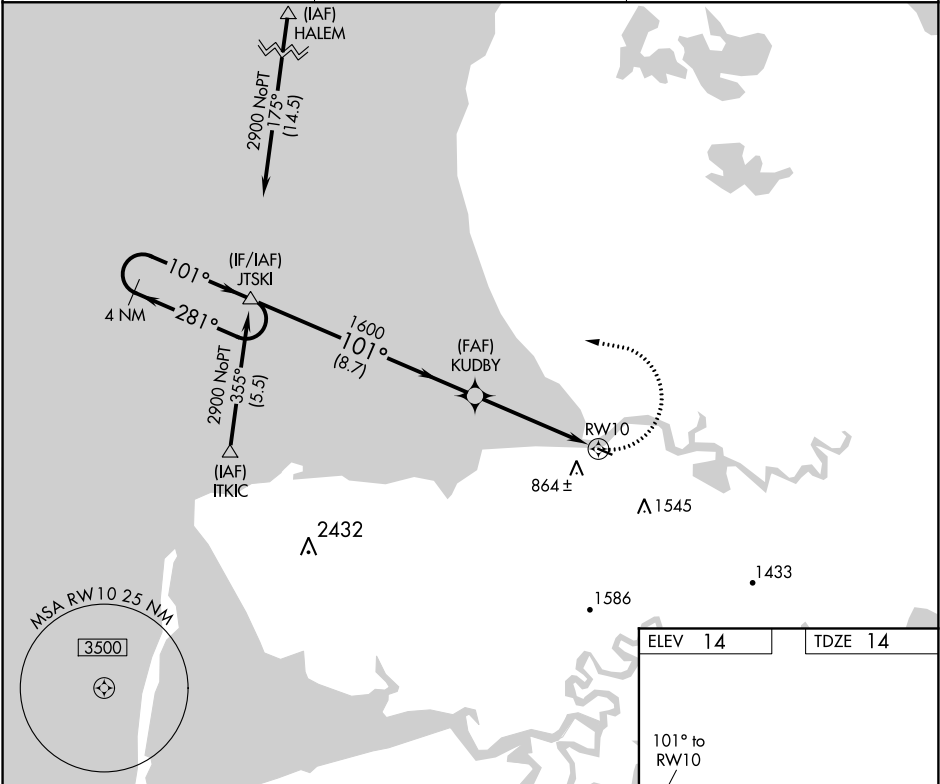
Circling NA south of Rwy 10-28. DME/DME RNP-0.3 NA. Visibility reduction by helicopters NA. VDP NA when using Hooper Bay altimeter setting. When local altimeter setting not received, use Hooper Bay altimeter setting and increase all MDA 360 feet.

MISSED APPROACH: Climbing left turn to 2900 direct JTSKI and hold.

AWOS-3P
118.425

ANCHORAGE CENTER
124.5

UNICOM
123.0 (CTAF) 0



4 NM Holding Pattern

2900 ← 281°
101° →

2900

101°

1600

3.4 NM to RWY 10

3.04°

TCH 40

1.4 NM

3.4 NM

101° to RWY 10

3001 X 75

28

97

CATEGORY	A	B	C	D
LNVA MDA	1100-1¼ 1086 (1100-1¼)	1100-1½ 1086 (1100-1½)	NA	
CIRCLING	1100-1¼ 1086 (1100-1¼)	1100-1½ 1086 (1100-1½)	NA	

MIRL Rwy 10-28 0