

WAAS CH 86640 W14A	APP CRS 144°	Rwy Idg TDZE 18 Apt Elev 18	5000
--	------------------------	---	-------------

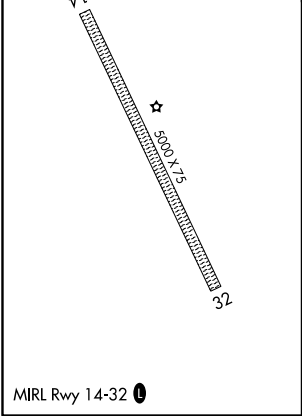
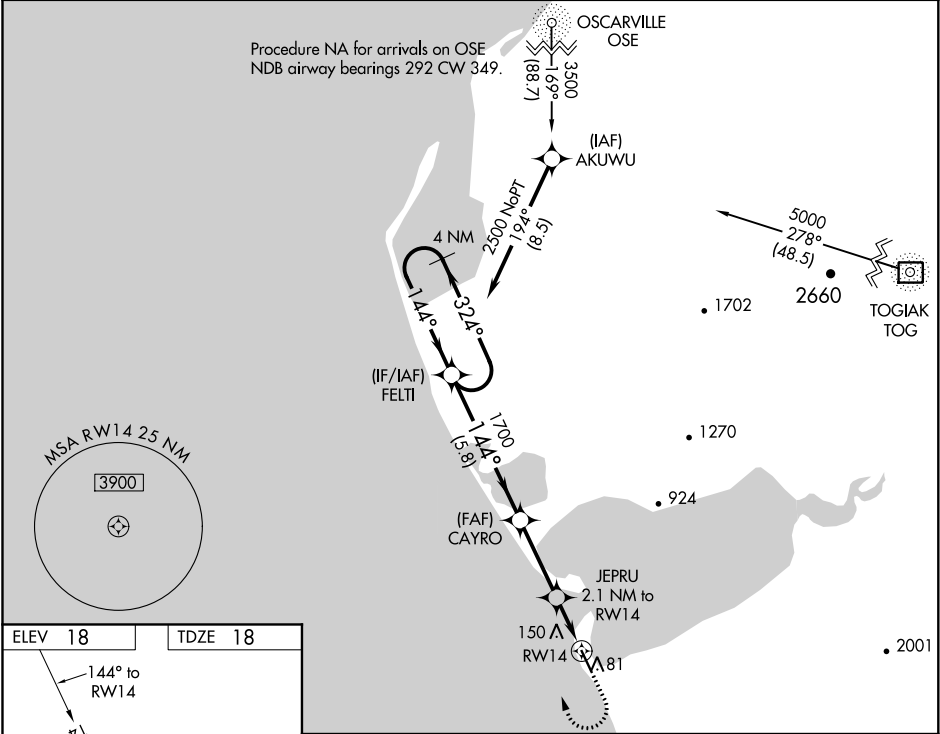
RNAV (GPS) RWY 14

PLATINUM (PTU)(PAPM)

For uncompensated Baro-VNAV systems, LNAV/VNAV NA below -20°C (-4°F) or above 54°C (130°F). Baro-VNAV and VDP NA when using Togiak altimeter setting. DME/DME RNP-0.3 NA. When local altimeter setting not received, use Togiak altimeter setting: increase LPV DA to 371 feet; increase LNAV/VNAV DA to 424 feet and all Cats visibilities ¾ SM; increase all MDA 120 feet and increase LNAV and Circling Cat C visibility ¼ SM.

MISSED APPROACH: Climb to 420 then Climbing right turn to 2500 direct FELTI and hold.

AWOS-3P 118.375	ANCHORAGE CENTER 124.2 251.1	UNICOM 122.8 (CTAF) 0
---------------------------	--	---------------------------------



4 NM Holding Pattern				FELTI	420	2500	FELTI
2500 ← 324°							
→ 144°							
GP 3.00° TCH 40				*1.1 NM to RW14			
1700							
5.8 NM				*720			
3.1 NM				1 NM			
1.1 NM				1.1 NM			
CATEGORY				D			
LPV DA				NA			
LNAV/ VNAV DA				NA			
LNAV MDA				NA			
CIRCLING				NA			

AK, 05 NOV 2020 to 31 DEC 2020

AK, 05 NOV 2020 to 31 DEC 2020