

WAAS CH 69536 W22A	APP CRS 218°	Rwy ldg TDZE Apt Elev	3700 354 354
--	------------------------	-----------------------------	---

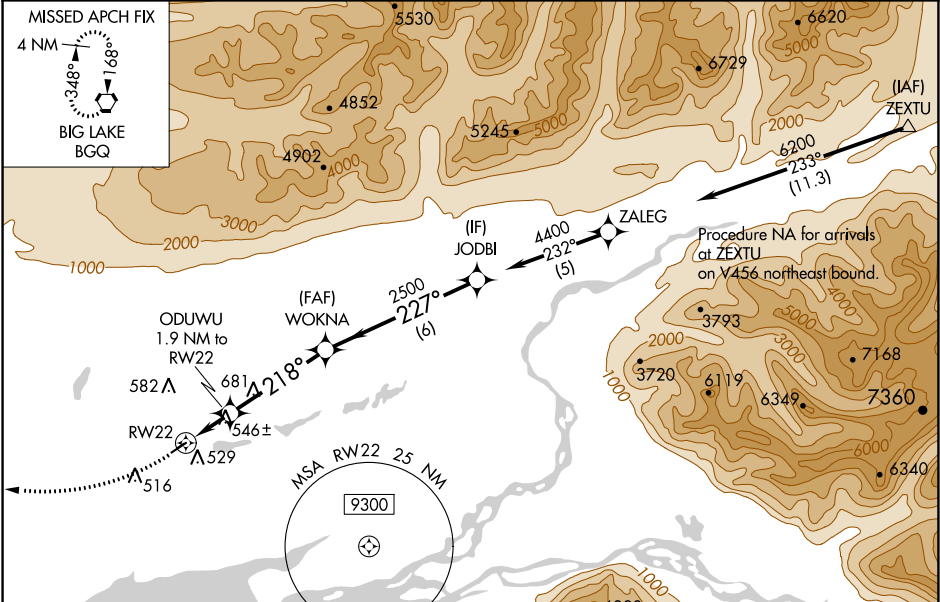
RNAV (GPS) RWY 22
WASILLA (IYS) (PAWS)

RNP APCH.

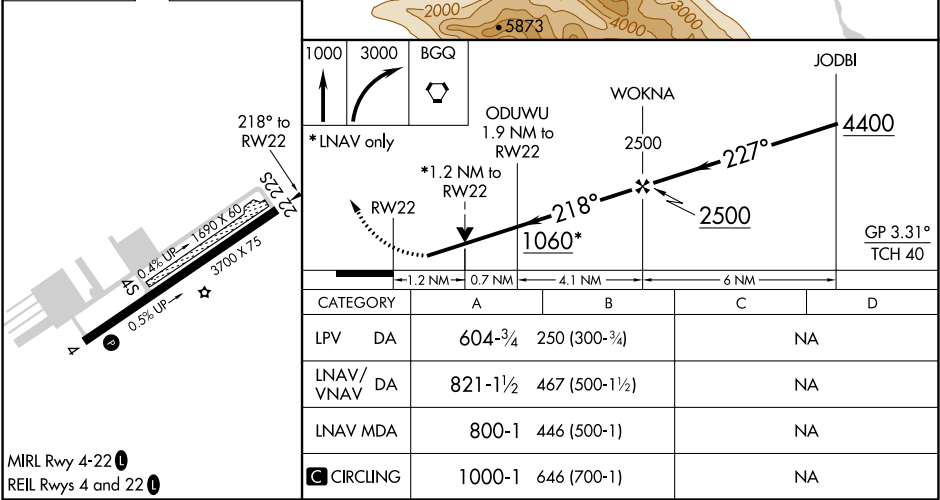
⚠ Circling NA to Rwy 4S and 22S. Baro-VNAV and VDP NA when using Palmer altimeter setting. Rwy 22 helicopter visibility reduction below $\frac{3}{4}$ SM NA. For uncompensated Baro-VNAV systems, LNAV/VNAV NA below -25°C or above 54°C. When local altimeter setting not received, use Palmer altimeter setting and increase all DA 46 feet, MDA 60 feet and all visibilities $\frac{1}{8}$ mile.

MISSED APPROACH:
Climb to 1000 then
descending right turn to
3000 direct BGQ
VORTAC and hold.

AWOS-3P 135.25	ANCHORAGE APP CON 119.1 363.2	CTAF 122.8 0
--------------------------	---	------------------------



ELEV 354	TDZE 354
-----------------	-----------------



MIRL Rwy 4-22 0	REIL Rwy 4 and 22 0
------------------------	----------------------------