

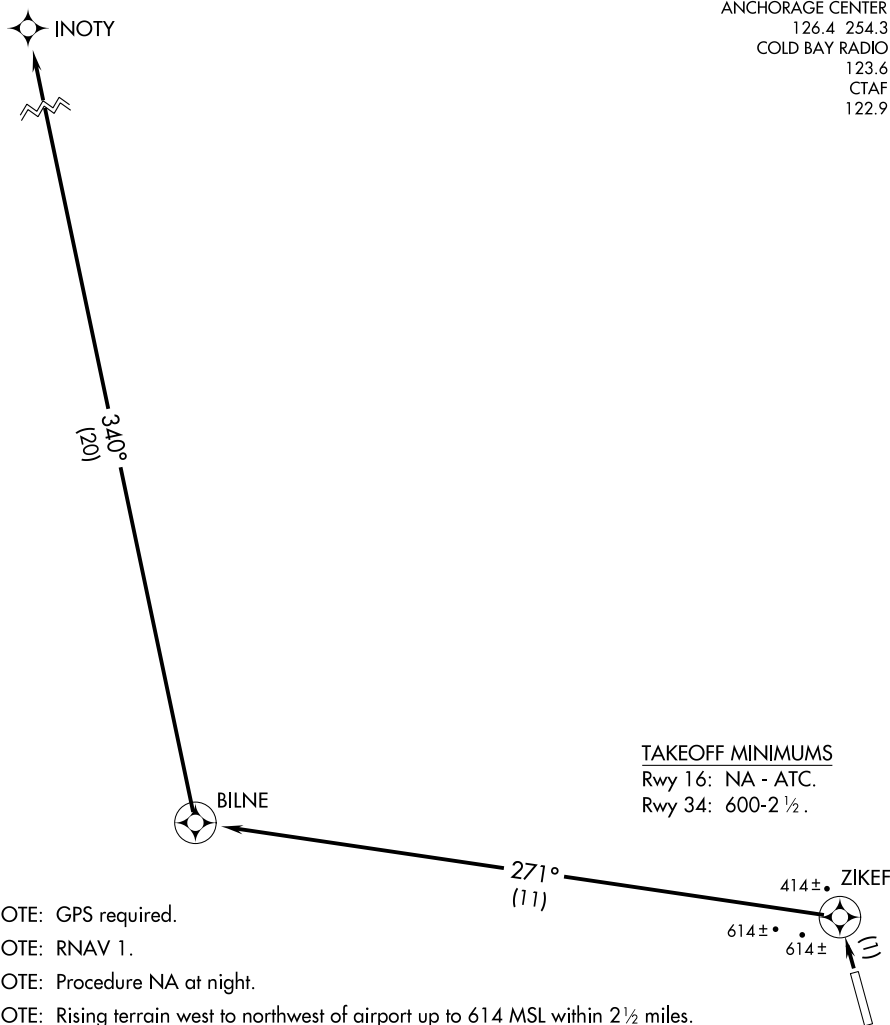
INOTY ONE DEPARTURE (OBSTACLE) (RNAV)

SL-9289 (FAA)

ATKA (AKA)(PAAK)

ATKA, ALASKA

ANCHORAGE CENTER
126.4 254.3
COLD BAY RADIO
123.6
CTAF
122.9



NOTE: GPS required.

NOTE: RNAV 1.

NOTE: Procedure NA at night.

NOTE: Rising terrain west to northwest of airport up to 614 MSL within 2½ miles.

TAKEOFF OBSTACLE NOTE

Rwy 34: Multiple trees and vehicles starting 10' from DER, 40' left of centerline to 1231' right of centerline, up to 15' AGL/414' MSL.

DEPARTURE ROUTE DESCRIPTION

TAKEOFF RUNWAY 34: Climb to 6000 or assigned altitude direct ZIKEF, then on track 271° to BILNE, then on track 340° to INOTY before proceeding on course.

INOTY ONE DEPARTURE (OBSTACLE) (RNAV)

(INOTY1.INOTY) 29JUL10

ATKA, ALASKA

ATKA (AKA)(PAAK)

AK, 05 NOV 2020 to 31 DEC 2020

AK, 05 NOV 2020 to 31 DEC 2020