

WAAS CH 99425 W23A	APP CRS 229°	Rwy Idg 4589 TDZE 45 Apt Elev 45
----------------------------------------	------------------------	-------------------------------------------------------------

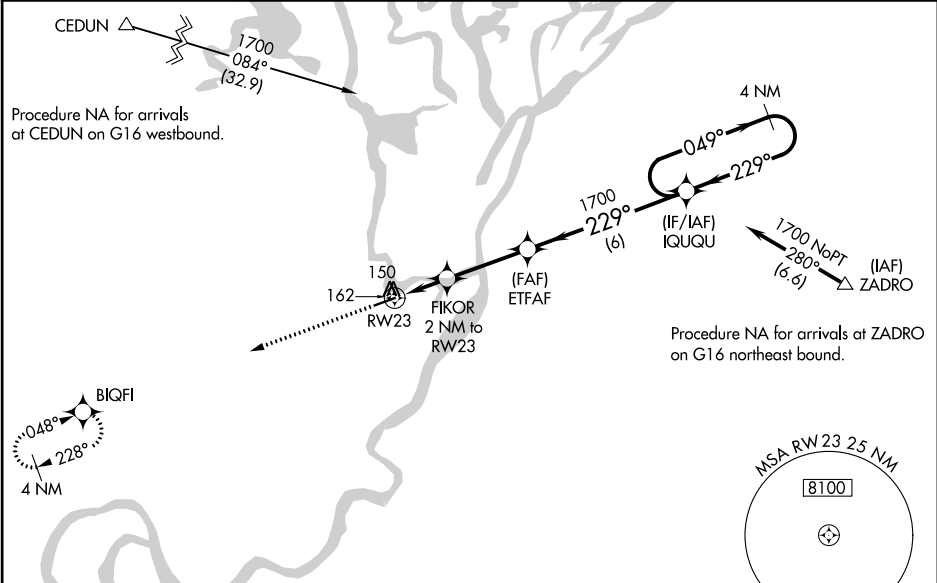
RNAV (GPS) RWY 23
NUIQSUT (AQT) (PAQT)

⚠
⚠ -41°C

For uncompensated Baro-VNAV systems, LNAV/VNAV NA below -25°C (-13°F) or above 54°C (130°F). DME/DME RNP-0.3 NA. Baro-VNAV NA with Deadhorse altimeter setting. When local altimeter setting not received, use Deadhorse altimeter setting and increase all DA 123 feet and all MDA 140 feet, increase LPV all Cats and LNAV Circling Cat C visibility ¼ mile, increase LNAV/VNAV all Cats and LNAV Cat C visibility ½ mile.

MISSED APPROACH:
Climb to 1700 direct
BIGFI and hold.

ASOS 135.35	ANCHORAGE CENTER 119.4	DEADHORSE RADIO 122.5	CTAF 122.8
-----------------------	----------------------------------	---------------------------------	----------------------



ELEV **45** TDZE **45**

HIRL Rwy 5-23 **⓪**
REIL Rwy 23 **⓪**

4589 X 100
229° to RW23

1700 BIGFI VGSi and RNAV glidepath not coincident (VGSi Angle 3.00°/TCH 33).

ETFAF 1700 420

FIKOR 2 NM to RW23 720* 1700 4 NM Holding Pattern

* LNAV only 2 NM 3.1 NM 6 NM GP 3.00° TCH 52

CATEGORY	A	B	C	D
LPV DA	295-1	250 (300-1)		NA
LNAV/VNAV DA	369-1	324 (400-1)		NA
LNAV MDA	480-1	435 (500-1)	480-1½ 435 (500-1½)	NA
CIRCLING	520-1	475 (500-1)	520-1½ 475 (500-1½)	NA

AK, 05 NOV 2020 to 31 DEC 2020

AK, 05 NOV 2020 to 31 DEC 2020