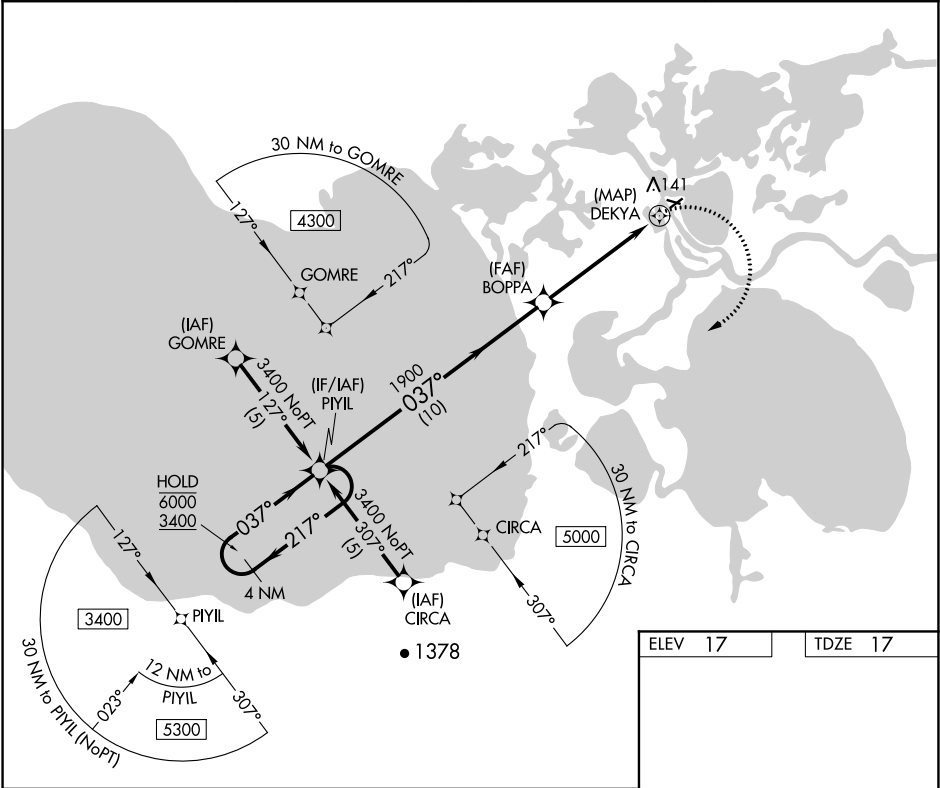


APP CRS	Rwy Idg	<b>3002</b>
<b>037°</b>	TDZE	<b>17</b>
	Apt Elev	<b>17</b>

RNAV (GPS) RWY 4  
SELAWIK (WLK) (PASK)

RNP APCH.	MISSED APPROACH: Climbing right turn to 3400 direct PIYIL and hold.
-36°C	Circling Rwy 9, 27 NA at night. Rwy 4 helicopter visibility reduction below ¾ SM NA.

AWOS-3P <b>135.65</b>	ANCHORAGE CENTER <b>119.2 263.0</b>	KOTzebue RADIO <b>122.5</b>	CTAF <b>122.7 0</b>
--------------------------	--	--------------------------------	------------------------



4 NM Holding Pattern		VGSI and descent angles not coincident (VGSI Angle 3.00/TCH 25).		3400	PIYIL
6000 3400		10 NM		1.2 NM	
CATEGORY	A	B	C	D	
LNNAV MDA	420-1	403 (500-1)	420-1¼	403 (500-1¼)	
CIRCLING	480-1	463 (500-1)	480-1½ 463 (500-1½)	580-2 563 (600-2)	

ELEV 17	TDZE 17
MIRL Rwy 9-27 and 4-22 0	