

LOC I-PBV	APP CRS	Rwy Idg	4982
110.1	111°	TDZE	128
		Apt Elev	128

ILS or LOC RWY 11

ST GEORGE (PBV) (PAPB)

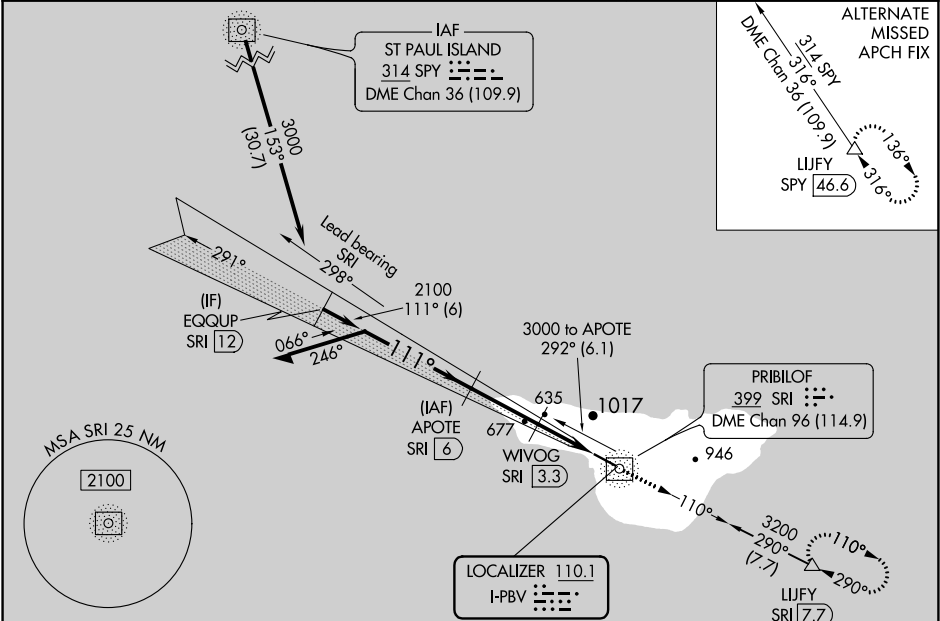
⚠

DME from SRI NDB/DME. Simultaneous reception of I-PBV and SRI DME required. Circling NA north of Rwy 11-29. ADF and DME required. Inop table does not apply to S-LOC 11 Cats A and B and S-ILS 11 all Cats.

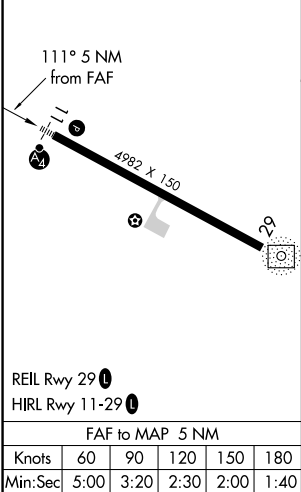
MALSF

MISSED APPROACH: Climb to 3200 on SRI NDB/DME bearing 110° to LIJFY/SRI 7.7 DME and hold, continue climb-in-hold to 3200.

ASOS 135.45	ANCHORAGE CENTER 119.1 339.8	CTAF 122.8
----------------	---------------------------------	---------------



ELEV 128	TDZE 128
----------	----------



ADF and DME REQUIRED

Remain within 10 NM

APOTE SRI 6

WVOG SRI 3.3

3200 SRI 110° LIJFY SRI 7.7

\*LOC only

3000 291° 2100 111° 2100

GS 3.60° TCH 56

\*1060

2.7 NM 0.6 NM 1.7 NM

SRI 2.7

SRI 1

SRI NDB/DME

CATEGORY	A	B	C	D
S-ILS 11	428-1	300 (300-1)		NA
S-LOC 11	840-1	712 (800-1)	840-1¾ 712 (800-1¾)	NA
CIRCLING	840-1 712 (800-1)	980-1¼ 852 (900-1¼)	980-2½ 852 (900-2½)	NA