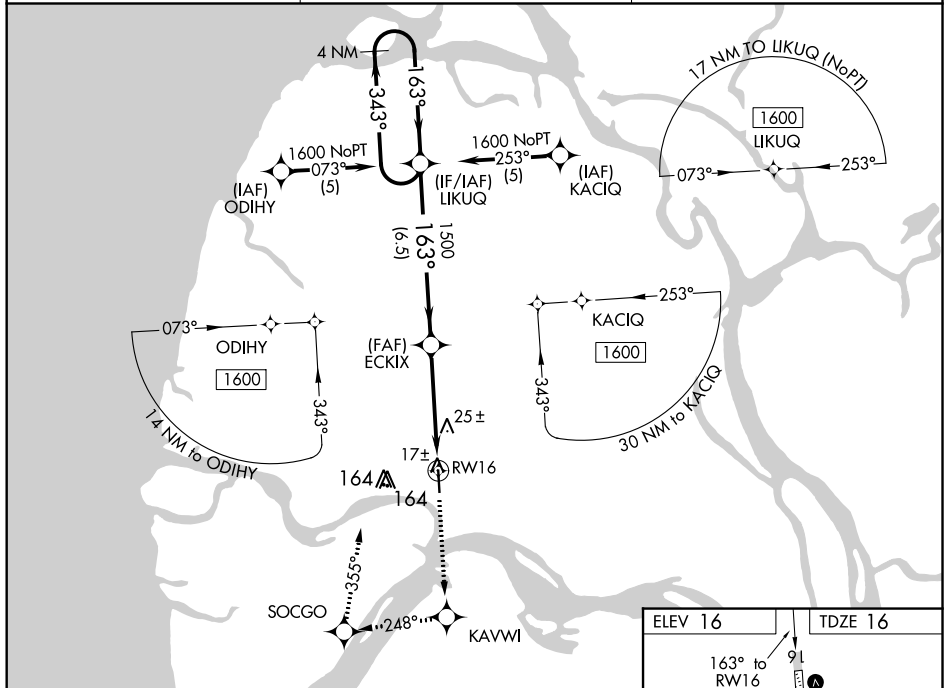


RNAV (GPS) RWY 16
EMMONAK (ENM) (PAEM)

MISSED APPROACH: Climb to 1600 direct KAVWI and right turn via 248° track to SOCGO and right turn via 355° track to UKUQ and hold.

AWOS-3P 135.35	ANCHORAGE CENTER 124.5	CTAF 122.9 0
--------------------------	----------------------------------	------------------------



ELEV 16

163° to RW16

4060' X 100'

34

REIL Rwy 34

MIRL Rwy 16-34

AK, 05 NOV 2020 to 31 DEC 2020