

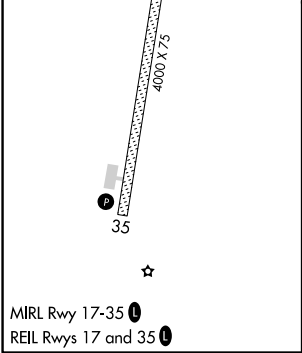
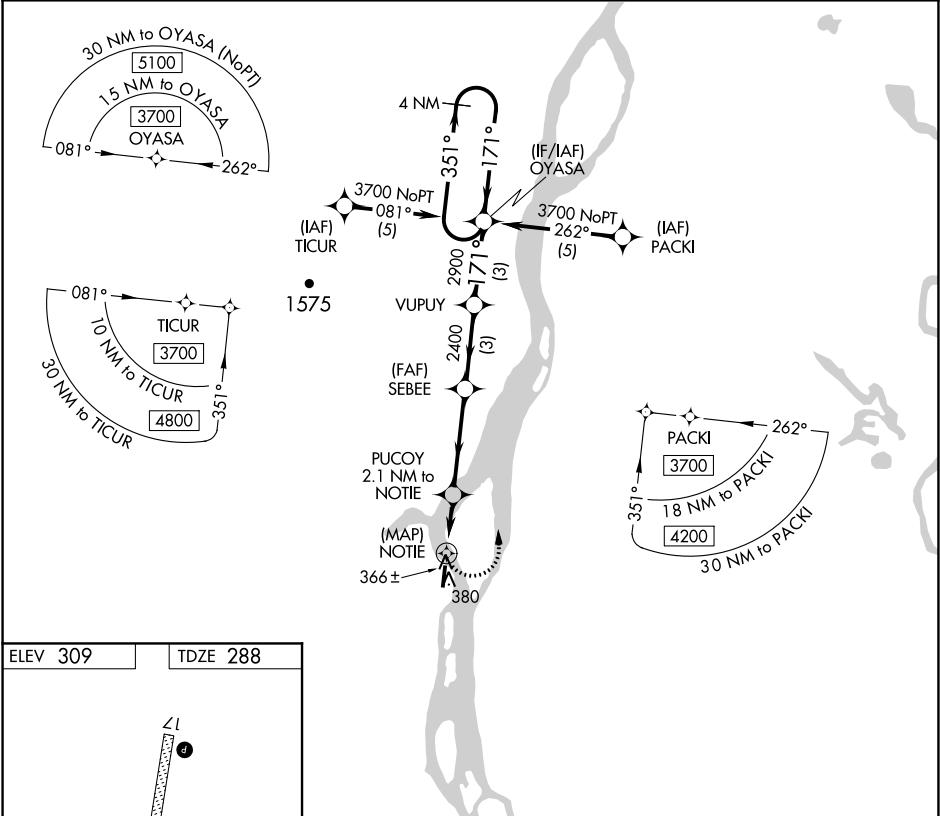
APP CRS	Rwy Idg	4000
171°	TDZE	288
	Apt Elev	309

RNAV (GPS) RWY 17

ANVIK (ANV)(PANV)

<p>⚠ DME/DME RNP-0.3 NA. When local altimeter setting not received, use Holy Cross altimeter setting and increase all MDAs 120 feet and LNAV visibility Cat C ¼ mile, Cat D ½ mile.</p> <p>❄ -32°C</p>	<p>MISSED APPROACH: Climbing left turn to 3700 direct OYASA and hold, continue climb-in-hold to 3700.</p>
--	--

AWOS-3P 133.55	ANCHORAGE CENTER 135.7 335.5	KENAI RADIO 122.4	UNICOM 122.7 (CTAF) 0
--------------------------	--	-----------------------------	---------------------------------



3700	OYASA	VGSi and descent angles not coincident (VGSi Angle 3.00/TCH 25).			
		PUCOY 2.1 NM to NOTIE	SEBEE	VUPLY	OYASA 4 NM Holding Pattern
		NOTIE	1140	2400	2900
		3.06°	TCH 35	171°	351°
		0.5	2.1 NM	3.8 NM	3 NM
CATEGORY	A	B	C	D	
LNAV MDA	700-1	412 (400-1)	700-1½	412 (400-1½)	
CIRCLING	840-1	543 (600-1)	840-1½	860-2	
			543 (600-1½)	563 (600-2)	