

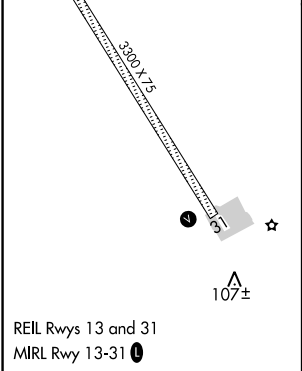
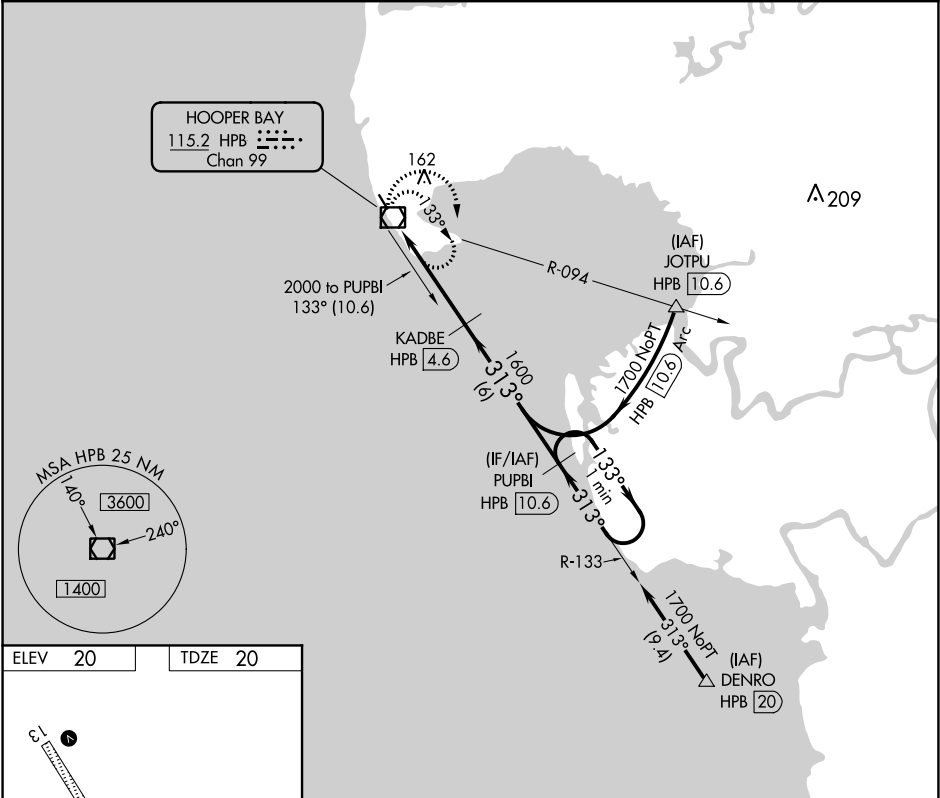
VOR/DME HPB	APP CRS	Rwy Idg	3300
115.2	313°	TDZE	20
Chan 99		Apt Elev	20

VOR/DME RWY 31  
HOOPER BAY (HPB) (PAHP)

- ▼ When local altimeter setting not received, use Scammon Bay altimeter setting and increase all MDA 60 feet and S-31 Cats C/D visibility ¼ mile. Inoperative table does not apply.

▲ Helicopter visibility reduction below 1 SM NA. Straight-in and Circling Rwy 31 NA at night.
- MISSED APPROACH:  
Climbing right turn to 2000 in HPB VOR/DME holding pattern.

AWOS-3P 135.1	KENAI RADIO 122.4	CTAF 123.0
------------------	----------------------	---------------



2000	HPB	VGSI and descent angles not coincident (VGSI Angle 3.00/TCH 28).	PUPBI HPB 10.6	One Minute Holding Pattern
			KADBE HPB 4.6	
			HPB VOR/DME	
			1600	
			133°	
			313°	
			1700	
			0.4	
			4.6 NM	
			6 NM	
CATEGORY	A	B	C	D
S-31	380-1	360 (400-1)		380-1¼ 360 (400-1¼)
CIRCLING	420-1 400 (500-1)	480-1 460 (500-1)	480-1½ 460 (500-1½)	580-2 560 (600-2)