

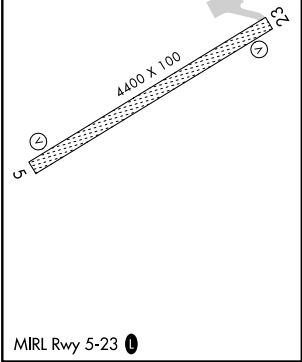
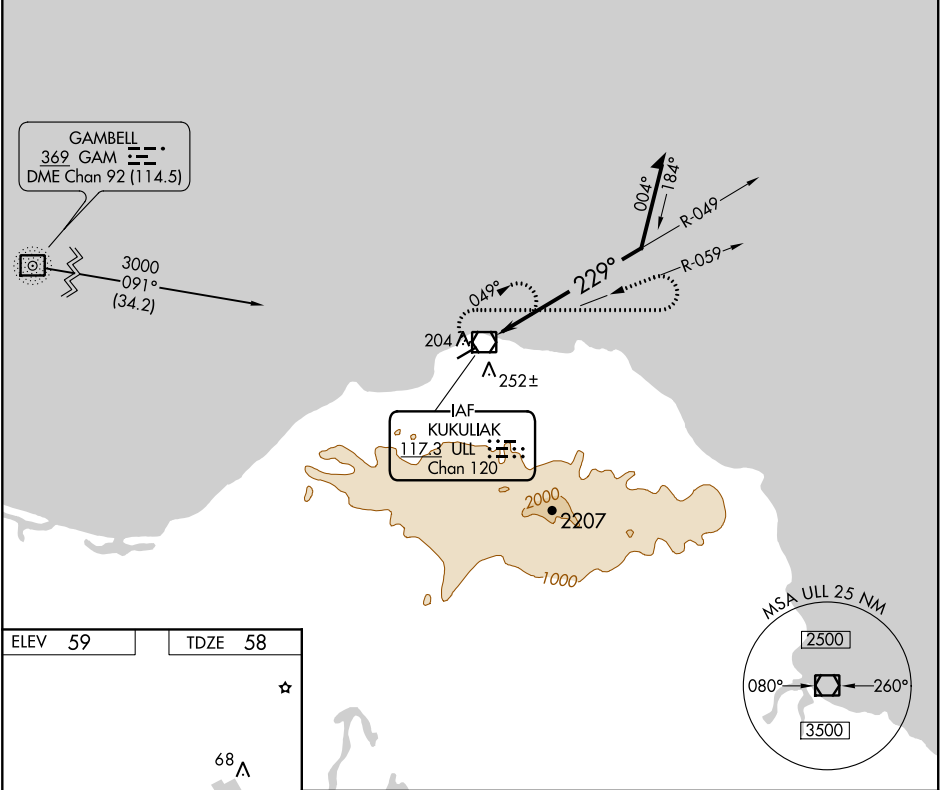
VOR/DME ULL	APP CRS	Rwy Idg
<b>117.3</b>	<b>229°</b>	<b>4400</b>
Chan <b>120</b>		TDZE <b>58</b>
		Apt Elev <b>59</b>

VOR RWY 23  
SAVOONGA (SVA) (PASA)

**⚠** Circling NA southeast of Rwy 5-23. When local altimeter setting not received, use Gambell altimeter setting and increase all MDA 100 feet, and increase S-23 Cat C-D and Circling Cat C-D visibility ¼ mile. VDP NA with Gambell altimeter setting.

**MISSED APPROACH:** Climbing right turn to 3300 via heading 090° and ULL VOR/DME R-059 then left turn via ULL VOR/DME R-059 to ULL VOR/DME and hold.

AWOS-3P <b>121.3</b>	ANCHORAGE CENTER <b>132.2 281.4</b>	NOME RADIO <b>122.3</b>	CTAF <b>122.7</b> <b>0</b>
-------------------------	--	----------------------------	-------------------------------



3300		ULL R-059		ULL R-059		ULL	
