

WAAS CH 58009 W11A	APP CRS 114°	Rwy Idg TDZE Apt Elev	7500 88 88
--	------------------------	-----------------------------	---------------------------------------

RNAV (GPS) RWY 11

KETCHIKAN INTL (KTN)(PAKT)

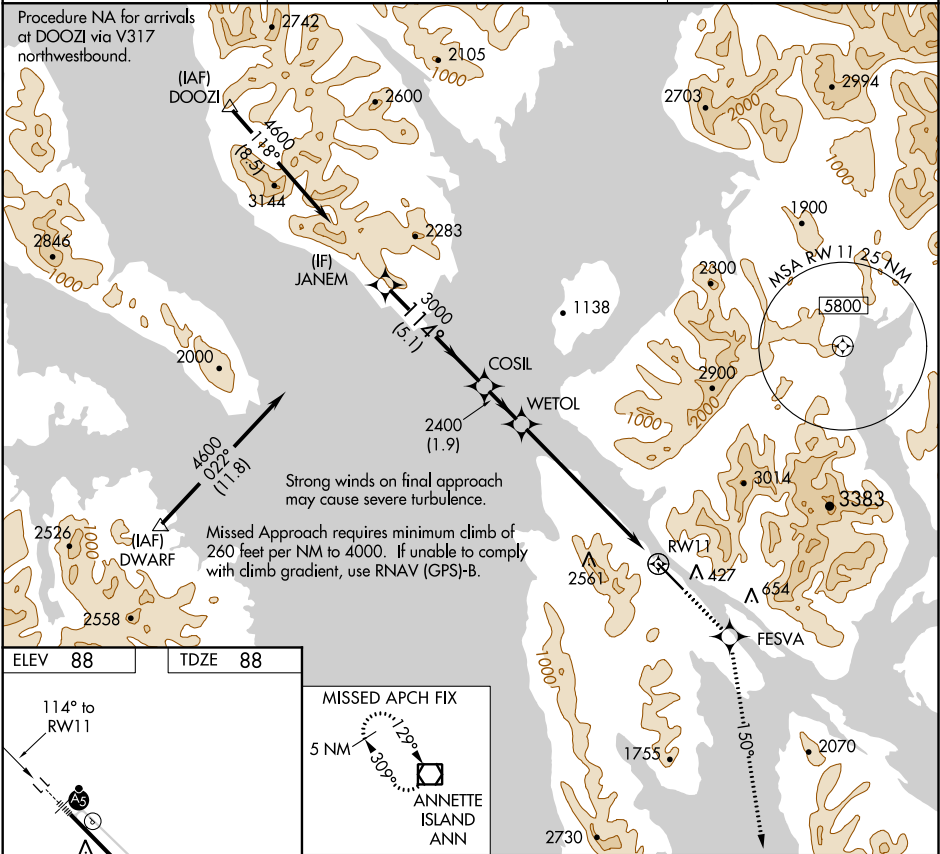
NA

For inoperative MALSR, increase LPV DA visibility to RVR 6000. DME/DME RNP-0.3 NA.

MALSR

MISSED APPROACH: Climb to 5000 direct FESVA and via 150° track to ANN VOR/DME and hold.

AFIS 134.45	ANCHORAGE CENTER 118.5 284.6	KETCHIKAN RADIO 123.6 (CTAF) 0
-----------------------	--	--



ELEV 88

TDZE 88

114° to RW11

WATER RWY:
WNW-ESE 9500 X 1500

MISSED APCH FIX

Procedure

Turn NA

JANEM

COSIL

WETOL

RW11

5000

FESVA

150° tr

ANN

GP 3.00°

TCH 50

4600

3000

2400

5.1 NM

1.9 NM

6.8 NM

CATEGORY	A	B	C	D
LPV DA	438/40 350 (400-¾)			