

VOR/DME SCC 113.9 Chan 86	APP CRS 058°	Rwy Idg 6500 TDZE 67 Apt Elev 67	VOR RWY 6 DEADHORSE (SCC) (PASC)
---	------------------------	---	-------------------------------------

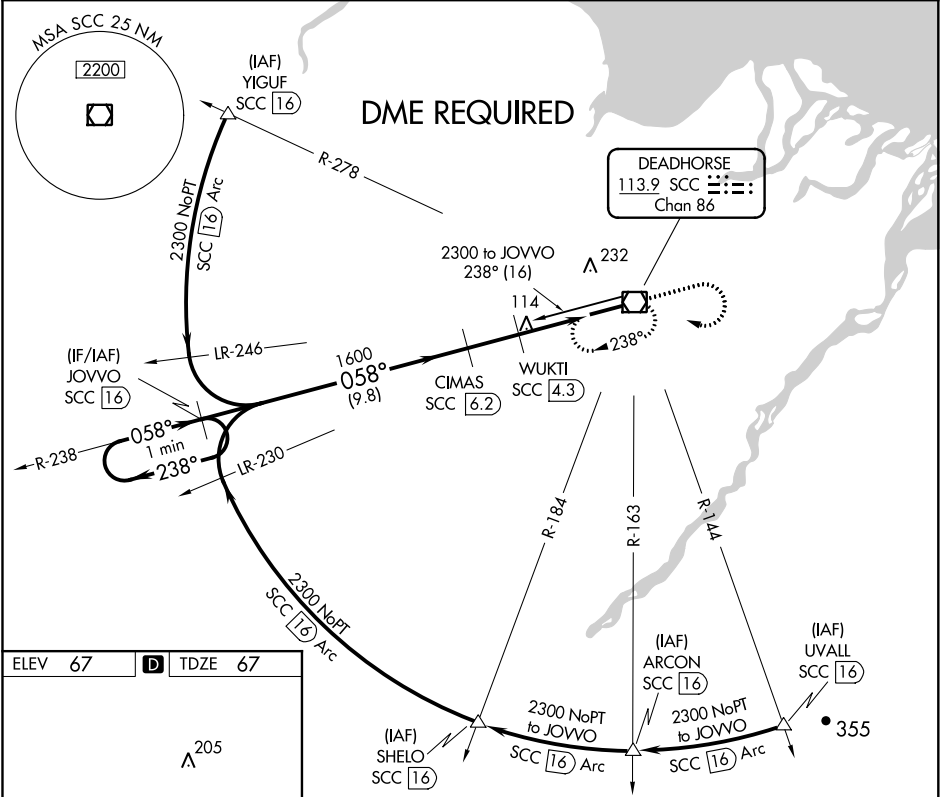
-45°C

DME required.
For inop ALS, increase S-6 Cats C/D/E to RVR 4500.

MALSR

MISSED APPROACH: Climb to 1500 then climbing right turn to 2000 direct SCC VOR/DME and hold, continue climb-in-hold to 2000.

AFIS 118.4	ANCHORAGE CENTER 134.4 370.9	DEADHORSE RADIO 123.6 (CTAF) 0
----------------------	--	---



ELEV 67 TDZE 67

HIRL Rwy 6-24 **0**

One Minute Holding Pattern		JOVVO SCC 16	CIMAS SCC 6.2	WUKTI SCC 4.3	1500	2000	SCC
2300 ← 238° → 058° → 058°		1600	980	SCC 2.4	SCC 1.6		
		9.8 NM	1.9 NM	1.9 NM	0.8		
CATEGORY	A	B	C	D	E		
S-6	380/24 313 (400-½)						
CIRCLING	540-1	473 (500-1)	580-1½ 513 (600-1½)	620-2	553 (600-2)		