

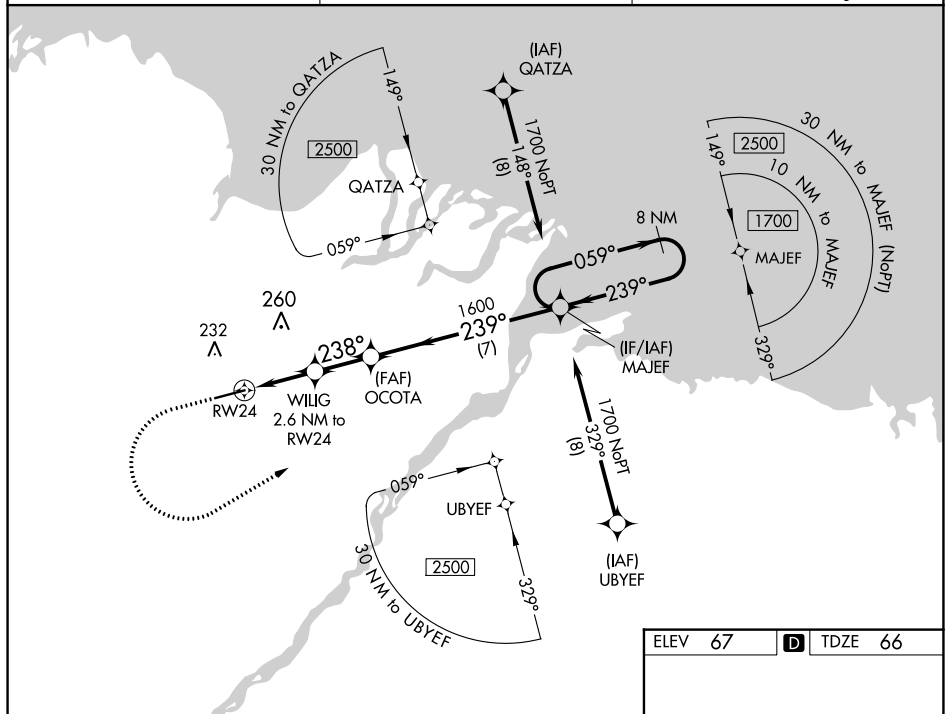


WAAS CH <b>69203</b> <b>W24A</b>	APP CRS <b>238°</b>	Rwy Idg <b>6500</b> TDZE <b>66</b> Apt Elev <b>67</b>
--	------------------------	---

RNAV (GPS) Z RWY 24  
DEADHORSE (SCC) (PASC)

 -45°C	<p>For uncompensated Baro-VNAV systems, LNAV/VNAV NA below -17°C (2°F) or above 54°C (130°F). DME/DME RNP-0.3 NA.</p> <p>For inop ALS, increase LPV Cat E visibility to RVR 4000, LNAV/VNAV all Cats visibility to RVR 5000, and LNAV Cat E visibility to RVR 6000.</p> <p># RVR 1800 authorized with use of FD or AP or HUD to DA.</p>	<p>MALSR</p> 	<p>MISSED APPROACH: Climb to 500 then climbing left turn to 1700 direct MAJEF and hold.</p>
---	---	--	---

AFIS <b>118.4</b>	ANCHORAGE CENTER <b>134.4 370.9</b>	DEADHORSE RADIO <b>123.6 (CTAF) 0</b>
----------------------	--	--



**\*LNAV only.**

**MAJEF**

**OCOTA**

**WILIG**

**RW24**

**GP 3.00° TCH 54**

CATEGORY	A	B	C	D	E
LPV DA #	266/24 200 (200-½)				
LNAV/VNAV DA	381/30 315 (400-⅝)				
LNAV MDA	460/24	394 (400-½)	460/35	394 (400-⅝)	
<b>C</b> CIRCLING	540-1	473 (500-1)	580-1½ 513 (600-1½)	620-2 553 (600-2)	