

LOC/DME I-SCC 109.3 Chan 30	APP CRS 058°	Rwy Idg 6500 TDZE 67 Apt Elev 67
---	------------------------	---

ILS or LOC RWY 6
DEADHORSE (SCC) (PASC)

DME required.

T For inop ALS, increase S-ILS 6 Cat E visibility to RVR 4000 and
A S-LOC 6 Cats C/D/E to RVR 4500.

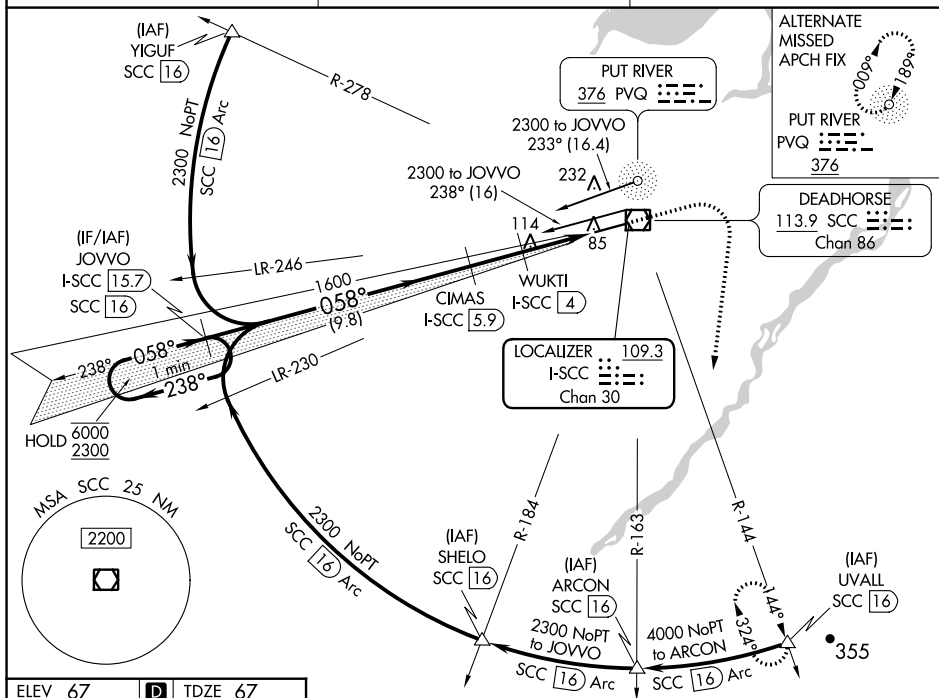
 -45°C #RVR 1800 authorized with use of FD or AP or HUD to DA.

MALSR

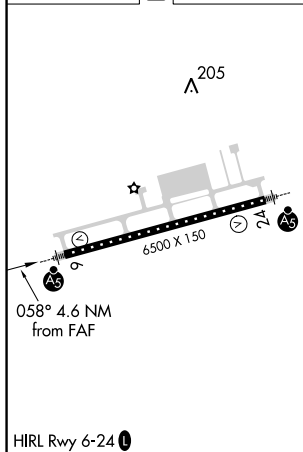


MISSED APPROACH: Climb to 1500 then climbing right turn to 4000 on heading 170° and SCC VOR/DME R-144 to UVALL/SCC 16 DME and hold.

AFIS 118.4	ANCHORAGE CENTER 134.4 370.9	DEADHORSE RADIO 123.6 (CTAF) 0
----------------------	--	--



ELEV 67	D	TDZE 67
---------	----------	---------



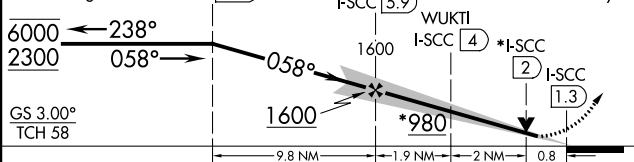
Use I-SCC DME when on the localizer course
VGS1 and ILS glidepath not coincident
(VGS1 Angle 3.00/TCH 50).

One Minute Holding Pattern

JOVVO
I-SCC 15.7

1500	4000	SCC R-144	UVAL △
------	------	--------------	-----------

*LOC only



CATEGORY	A	B	C	D	E
S-ILS 6 #	267/24 200 (200-½)				
S-LOC 6	360/24 293 (300-½)				
C CIRCLING	540-1 473 (500-1)	580-1½ 513 (600-1½)		620-2 553 (600-2)	