

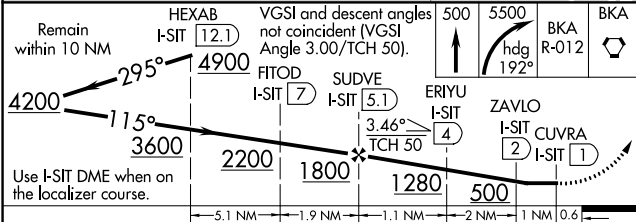
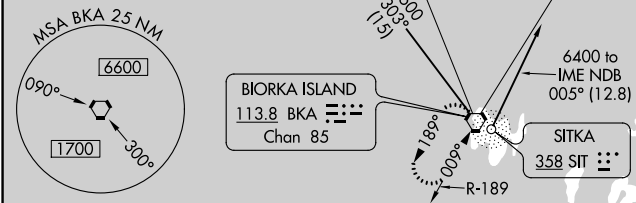
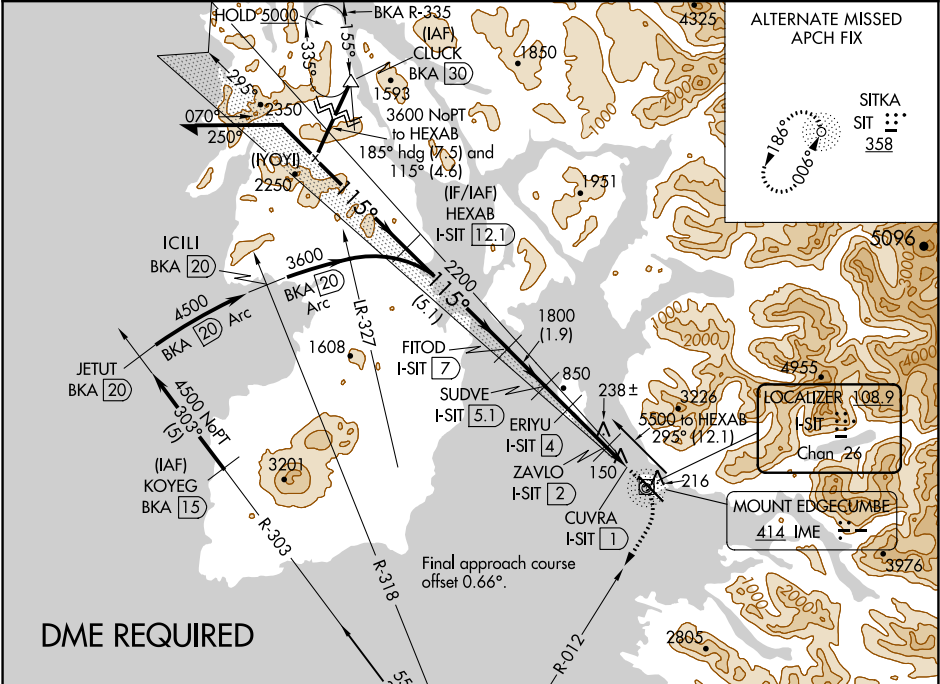
LOC/DME I-SIT	APP CRS	Rwy Idg	6500
108.9	115°	TDZE	24
Chan 26		Apt Elev	26

LDA/DME RWY 11
SITKA ROCKY GUTIERREZ (SIT)(PASI)

When local altimeter setting not received, procedure NA.
Circling NA northeast of Rwy 11-29.

MISSED APPROACH: Climb to 500 then climbing right turn to 5500 on heading 192° and BKA R-012 to BKA VORTAC and hold, continue climb-in-hold to 5500.

AFIS	ANCHORAGE CENTER	SITKA RADIO	UNICOM
135.9	126.1 335.5	123.6 (CTAF) 0 122.2	122.95



CATEGORY	A	B	C	D
S-11		400-1	376 (400-1)	
CIRCLING	520-1	494 (500-1)	760-2 734 (800-2)	1760-3 1734 (1800-3)

