

BETHEL, ALASKA

AL-5001 (FAA)

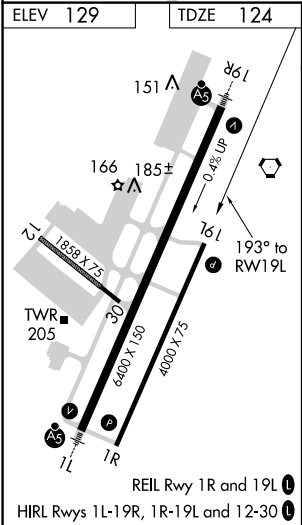
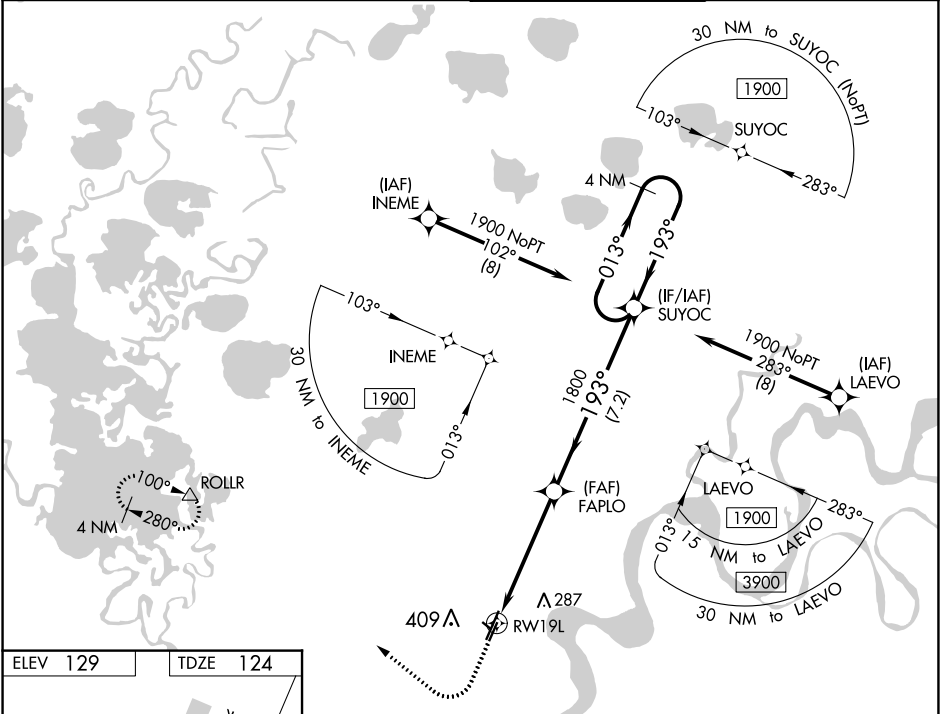
20254



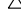
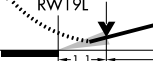

|  |                        |   |
|--|------------------------|---|
| WAAS<br>CH <b>99440</b><br><b>W19B</b> | APP CRS<br><b>193°</b> | Rwy Idg<br>TDZE <b>124</b><br>Apt Elev <b>129</b> |
|--|------------------------|---|

RNAV (GPS) RWY 19L  
BETHEL (BET)(PABE)

|   |   |
|---|---|
| <p><b>▼</b> For uncompensated Baro-VNAV systems, LNAV/VNAV NA below -19°C (-2°F) or above 54°C (130°F). Circling NA west of Rwy 1L-19R. DME/DME RNP-0.3 NA.</p> | MISSED APPROACH: Climb to 600 then climbing right turn to 2000 direct ROLLR and hold. |
|---|---|

|                      |  |   |                         |
|----------------------|--|---|-------------------------|
| ATIS<br><b>119.8</b> | ANCHORAGE CENTER<br><b>125.2 372.0</b> | BETHEL TOWER ★<br><b>118.7 (CTAF) 0</b> | GND CON<br><b>121.7</b> |
|----------------------|--|---|-------------------------|



|  |   |   |   |                       |   |
|--|---|---|---|-----------------------|---|
| 600  | 2000  | ROLLR   | VGSI and RNAV glidepath not coincident<br>(VGSI Angle 3.00/TCH 32). |                       |   |
|           |  |  |   |                       |   |
| *LNAV only   |   |   | FAPLO   | SUYOC                 |   |
|  |   |   | 1800  | 4 NM Holding Pattern  |   |
|           |   |   | 193°  | 013° → 1900<br>← 193° |   |
|  |   |   | 1800  | GP 3.00°<br>TCH 50    |   |
|  |   |   | 1.1   | 4 NM                  |   |
|  |   |   | 7.2 NM  |                       |   |
| CATEGORY   | A   |   | B   | C                     | D |
| LPV DA   |   |   | 374-¾   | 250 (300-¾)           |   |
| LNAV/VNAV DA   |   |   | 374-¾   | 250 (300-¾)           |   |
| LNAV MDA   |   |   | 500-1   | 376 (400-1)           |   |
|  CIRCLING | 500-1<br>371 (400-1)  | 600-1<br>471 (500-1)  | 600-1½<br>471 (500-1½)  | 680-2<br>551 (600-2)  |   |

BETHEL, ALASKA

Amdt 1 22JUN17

60°47'N-161°50'W

BETHEL (BET)(PABE)

RNAV (GPS) RWY 19L

AK, 05 NOV 2020 to 31 DEC 2020

AK, 05 NOV 2020 to 31 DEC 2020