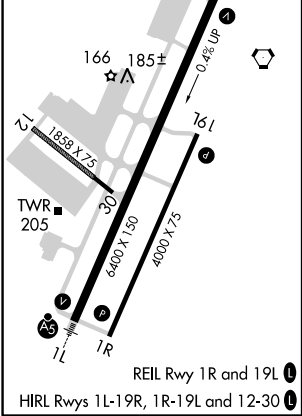
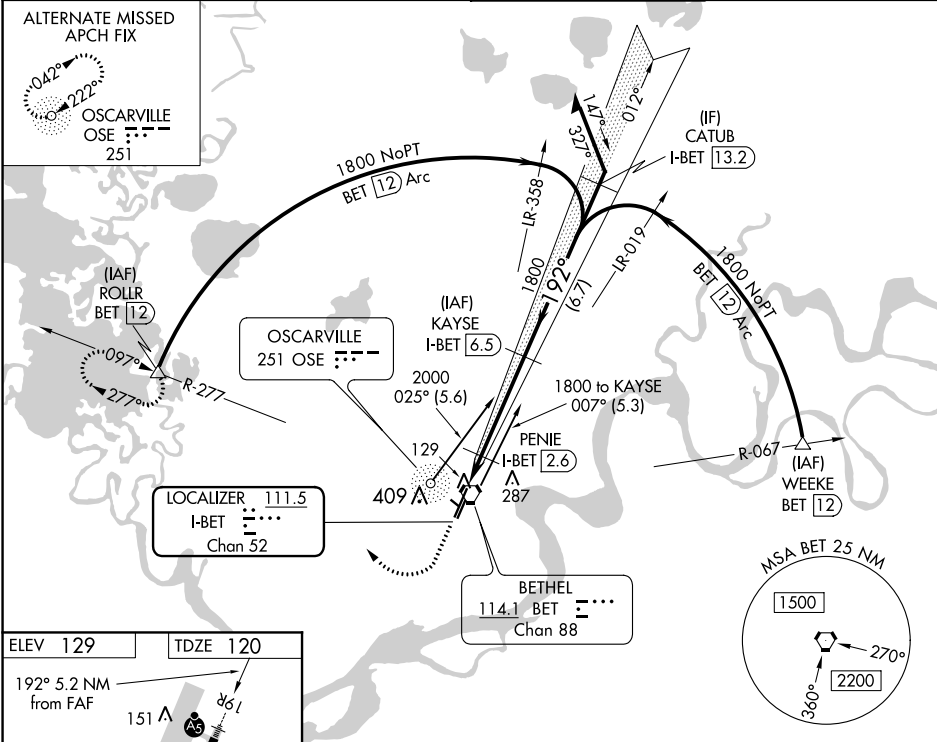


LOC/DME I-BET	APP CRS	Rwy Idg	6400
111.5	192°	TDZE	120
Chan 52		Apt Elev	129

ILS Z or LOC Z RWY 19R
BETHEL (BET)(PABE)

DME required.	MALSR	MISSED APPROACH: Climb to 700 then climbing right turn to 2000 on BET VORTAC R-277 to ROLLR/BET VORTAC 12 DME and hold.
<p>⚠ Circling NA west of Rwy 1L-19R. ⚠ For inop ALS, increase S-LOC Cat C/D visibility to RVR 4500. # RVR 1800 authorized with the use of FD or AP or HUD to DA.</p>		

ATIS 119.8	ANCHORAGE CENTER 125.2 372.0	BETHEL TOWER ★ 118.7 (CTAF) 0	GND CON 121.7
---------------	---------------------------------	----------------------------------	------------------



700	2000	ROLLR	KAYSE I-BET 6.5	Remain within 10 NM
*LOC only.	BET R-277	△	PENIE I-BET 2.6	
	I-BET 1.3	*I-BET 2.1	1800	192° 1800
	0.8	0.5	3.9 NM	GS 3.00° TCH 52
CATEGORY	A	B	C	D
S-ILS 19R#	320/24	200 (200-½)		
S-LOC 19R	400/24	280 (300-½)		
CIRCLING	500-1 371 (400-1)	600-1 471 (500-1)	600-1½ 471 (500-1½)	680-2 551 (600-2)