

RNAV (GPS) RWY 34

APCH CRS	Rwy ldg
345°	4702
TDZE	273
Arpt Elev	273

AL-2334 [USAF]

TIN CITY LRSS (PATC)

Night operations not authorized
DME/DME RNP - 0.3 NA
*Circling not authorized W of runway 16/34

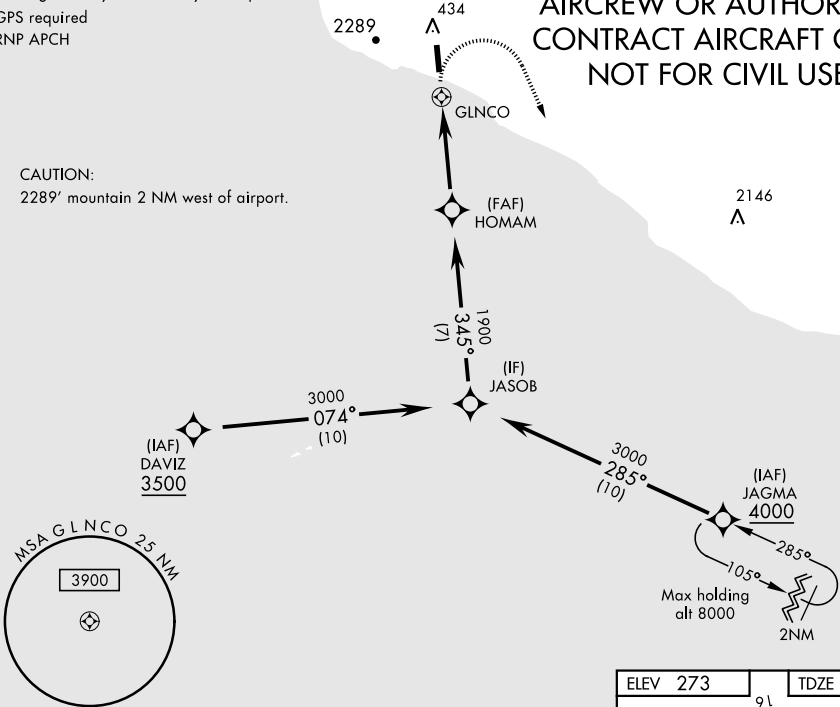
MISSED APPROACH: Climb to 1500 then climbing right turn to 4000 direct JAGMA and hold.

ANCHORAGE CENTER 133.3 290.4	TIN CITY RCO (NOME RADIO) 122.6	UNICOM 126.2 (CTAF)
---------------------------------	------------------------------------	------------------------

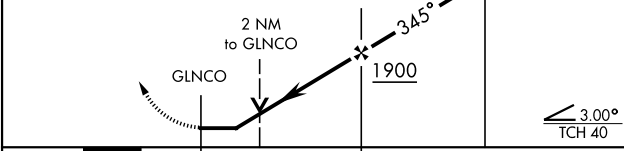
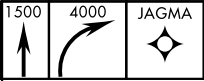
Uncontrolled airspace below 700' AGL within 7 NM of Tin City airport.
Circling visibility reduction by helicopters NA.
GPS required
RNP APCH

MILITARY CERTIFIED
AIRCREW OR AUTHORIZED
CONTRACT AIRCRAFT ONLY
NOT FOR CIVIL USE

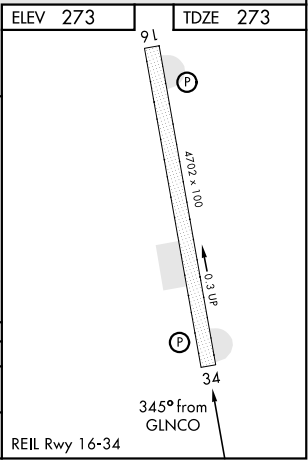
CAUTION:
2289' mountain 2 NM west of airport.



EMERG SAFE ALT 100 NM 6800



CATEGORY	A	B	C	D
LNAV MDA	1260-1¼ 987 (1000-1¼)	1260-1½ 987 (1000-1½)	1280-3 1007 (1100-3)	1280-3 1007 (1100-3)
CIRCLING*	1260-1¼ 987 (1000-1¼)	1260-1½ 987 (1000-1½)	1280-3 1007 (1100-3)	1280-3 1007 (1100-3)



RNAV (GPS) RWY 34