

RNAV (GPS) RWY 27

APCH CRS	Rwy ldg	4800
254°	THRE	14
	Arprt Elev	14

[USAF] AL-2327

CAPE LISBURNE LRRS (PALU)

* Circling not authorized south of runway 9-27
DME/DME RNP -0.3 NA
Night operations not authorized.

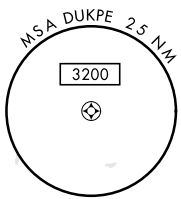
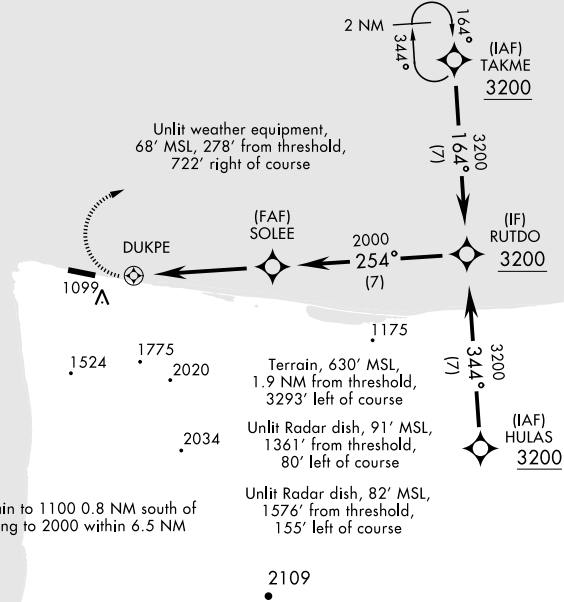
MISSED APPROACH: Climbing right turn to 3200 direct
TAKME and hold.

ANCHORAGE CENTER APP/DEP CON
119.65 363.25

CAPE LISBURNE RADIO 0
126.2 (CTAF)

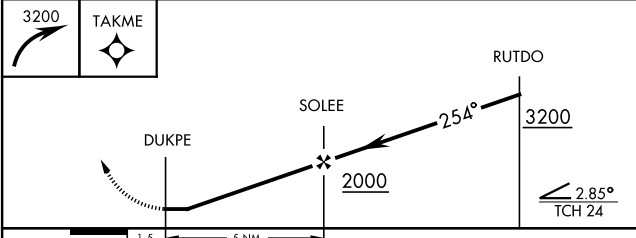
Military Certified Aircrew or
Authorized Contract Aircraft only.
Not for civil use.

Grid courses are True Polar courses and
convergence angle factor shall not be applied
Uncontrolled Airspace below 700' AGL
within 7 NM of Cape Lisburne airport



High terrain to 1100 0.8 NM south of
NDB rising to 2000 within 6.5 NM

EMERG SAFE ALT 100 NM 6700 FROM DUKPE



ELEV	14	THRE	14
<div>REIL Rwy 09-27 HIRL Rwy 09-27 0 TDZL Rwy 09-27 0</div>			

CATEGORY	A	B	C	D
LNAV MDA	1220-1 3/4 1206 (1300-1 3/4)		1220-3 1206 (1300-3)	NOT AUTHORIZED
CIRCLING*	1320-1 3/4 1306 (1400-1 3/4)		1320-3 1306 (1400-3)	NOT AUTHORIZED

RNAV (GPS) RWY 27

AK, 03 DEC 2020 to 31 DEC 2020

AK, 03 DEC 2020 to 31 DEC 2020